

Windham High School: 2017 NH YRBS Preliminary Report

Sexual and Dating Violence: Time Trends, By Sex, and By Grade

Windham High School is in the Greater Derry Public Health Region and is served by the Bridges crisis center.

PRELIMINARY RESULTS (v1.2)

This report contains preliminary results for 2017. All 2017 results are subject to change when the CDC returns the final dataset to the State, expected in early 2018. Please use caution when referring to and using these preliminary data until the final data set is received from the CDC. This report contains results for all questions asked on any YRBS survey since 2007. Note, access to regional level results were first made available in 2015 and are not available prior to that year.

State and Regional Estimates

State and Regional estimates are calculated from a random sample developed using scientific survey methods. These methods ensure the respondents are representative of students in the region in the State. These estimates account for student, classroom, school, and regional factors. The random sample is not designed to provide school level estimates.

School Level Estimates

The 2017 survey response rate at Windham High School was 87% where 786 of 901 students took the survey. **School level estimates are unweighted and based on a convenience sample of students in attendance, and not opting out of participation in the YRBS, on a given date and time during the school year.** However, because participation was relatively high the school estimates may still be representative of the entire school population. Results could be less representative if specific classrooms or classroom types were not included in the survey. We have attempted to estimate how many students in the school actually fall within each risk category. We did this by scaling up the students responding in the survey using school enrollment data.

Estimates number and percentage were suppressed (*) if the underlying sample size was <60 respondents and/or cell sizes are between 1 and 5.

Help and assistance

Questions on this report (NH YRBS Community level preliminary report)

Health Statistics and Data Management
Division of Public Health Services - State of NH
NH.YouthRiskBehaviorSurvey@dhhs.nh.gov; (603) 271-4988;

Additional technical assistance for YRBS related information

NH Center for Excellence
nhcenterforexcellence@jsi.com; (603) 573-3300
<http://nhcenterforexcellence.org/center-services/request-ta/>

Change Log

v1.2: Indicators revised to display by CDC question direction as greater risk; and, revised methodology to more accurately display number of students projected based on school enrollment data.

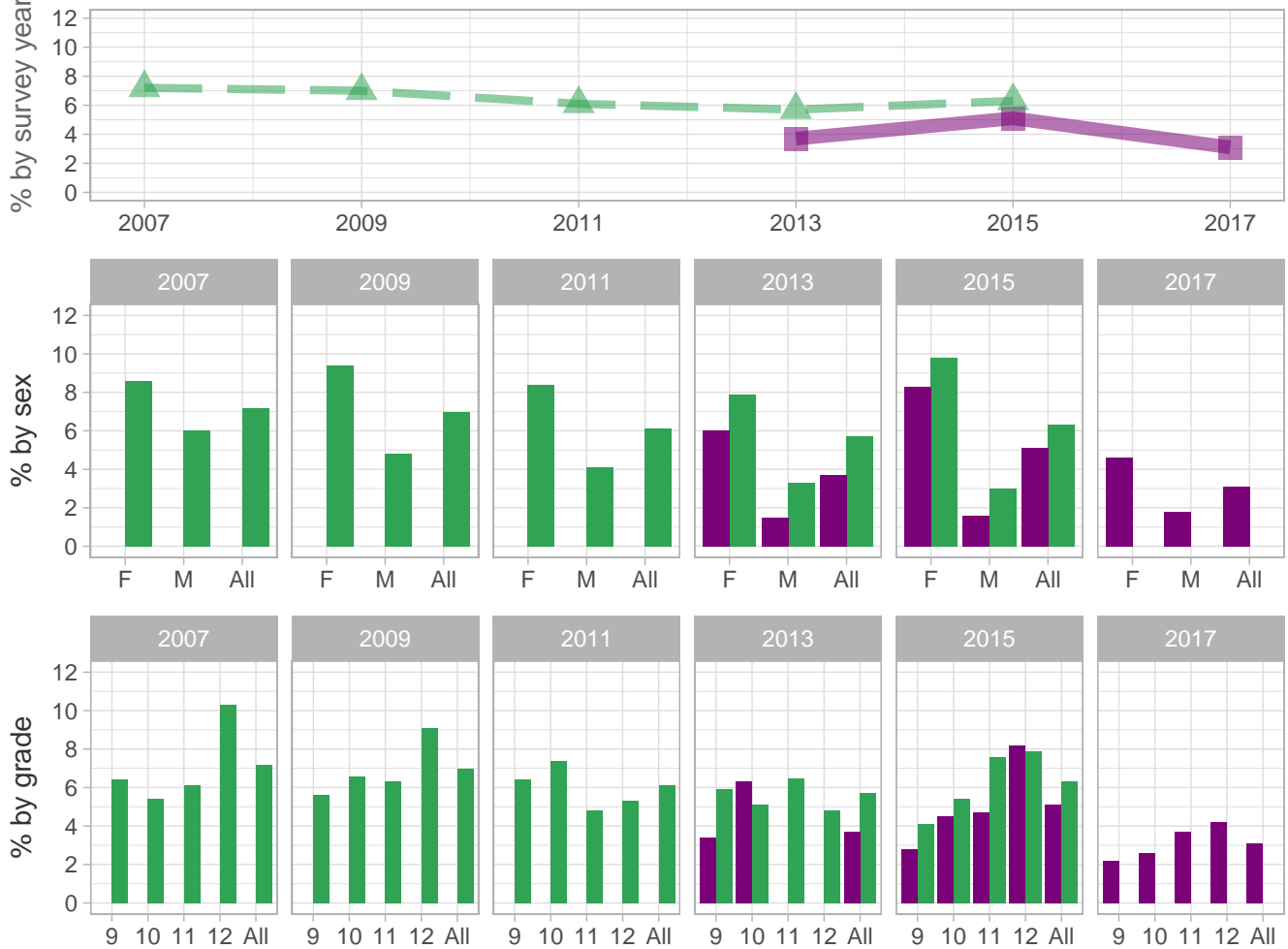
v1.1: School estimates corrected to include CDC sample - report sent 8/31-9/1

v1.0: Initial report sent 8/29

 School  Region  NH

Sexual and Dating Violence

Percent of students who were ever physically forced to have sexual intercourse when they did not want to



School-level by Sex and Grade

		2009(pct)	2011(pct)	2013(pct)	2015(pct)	2017(pct)	2017(n)
By sex	F	-	*	6.0	8.3	4.6	20
	M	-	*	1.5	1.6	1.8	9
By grade	9th	-	*	3.4	2.8	2.2	6
	10th	-	*	6.3	4.5	2.6	6
	11th	-	-	*	4.7	3.7	9
	12th	-	-	*	8.2	4.2	9
All	All	-	*	3.7	5.1	3.1	28

How the question was actually asked: Have you ever been physically forced to have sexual intercourse when you did not want to?; a: Yes ; b: No;

Percent (pct): numerator: a; denominator: ab; qid: 23; 2007q23; 2009q19; 2011q20; 2013q18; 2015q18; 2017q20;

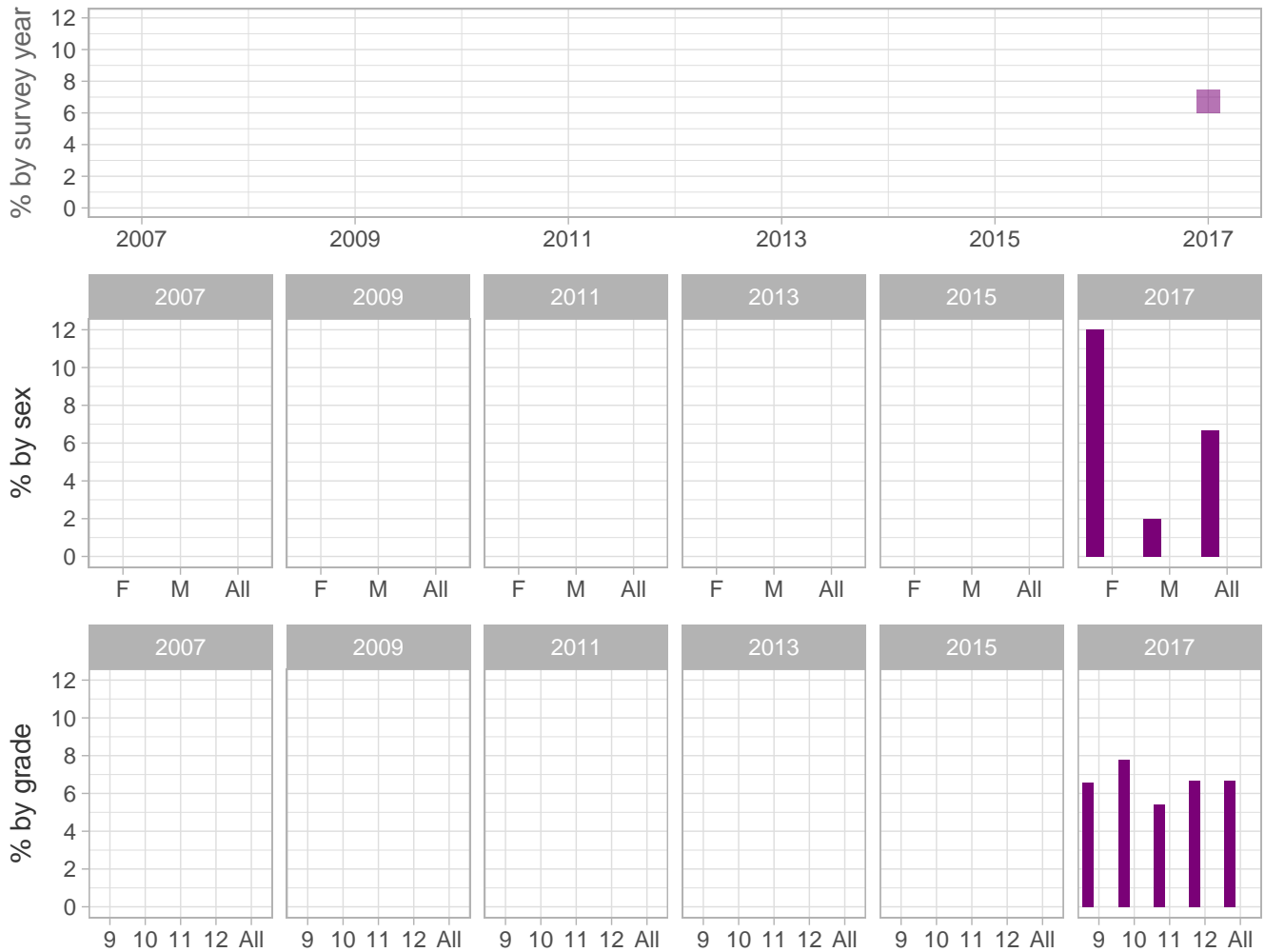
Number (n): Estimated number of students projected based on school enrollment data.

-: Data not available; *: Suppressed due to small cell sizes.



Sexual and Dating Violence

Percent of students who were forced to do unwanted sexual things during the past 12 months



School-level by Sex and Grade

		2009(pct)	2011(pct)	2013(pct)	2015(pct)	2017(pct)	2017(n)
By sex	F	-	-	-	-	12.0	52
	M	-	-	-	-	2.0	10
By grade	9th	-	-	-	-	6.6	18
	10th	-	-	-	-	7.8	18
	11th	-	-	-	-	5.4	12
	12th	-	-	-	-	6.7	13
All	All	-	-	-	-	6.7	61

How the question was actually asked: During the past 12 months, how many times did anyone force you to do sexual things that you did not want to do? (Count such things as kissing, touching, or being physically forced to have sexual intercourse.); a: 0 times ; b: 1 time ; c: 2 or 3 times ; d: 4 or 5 times ; e: 6 or more times;

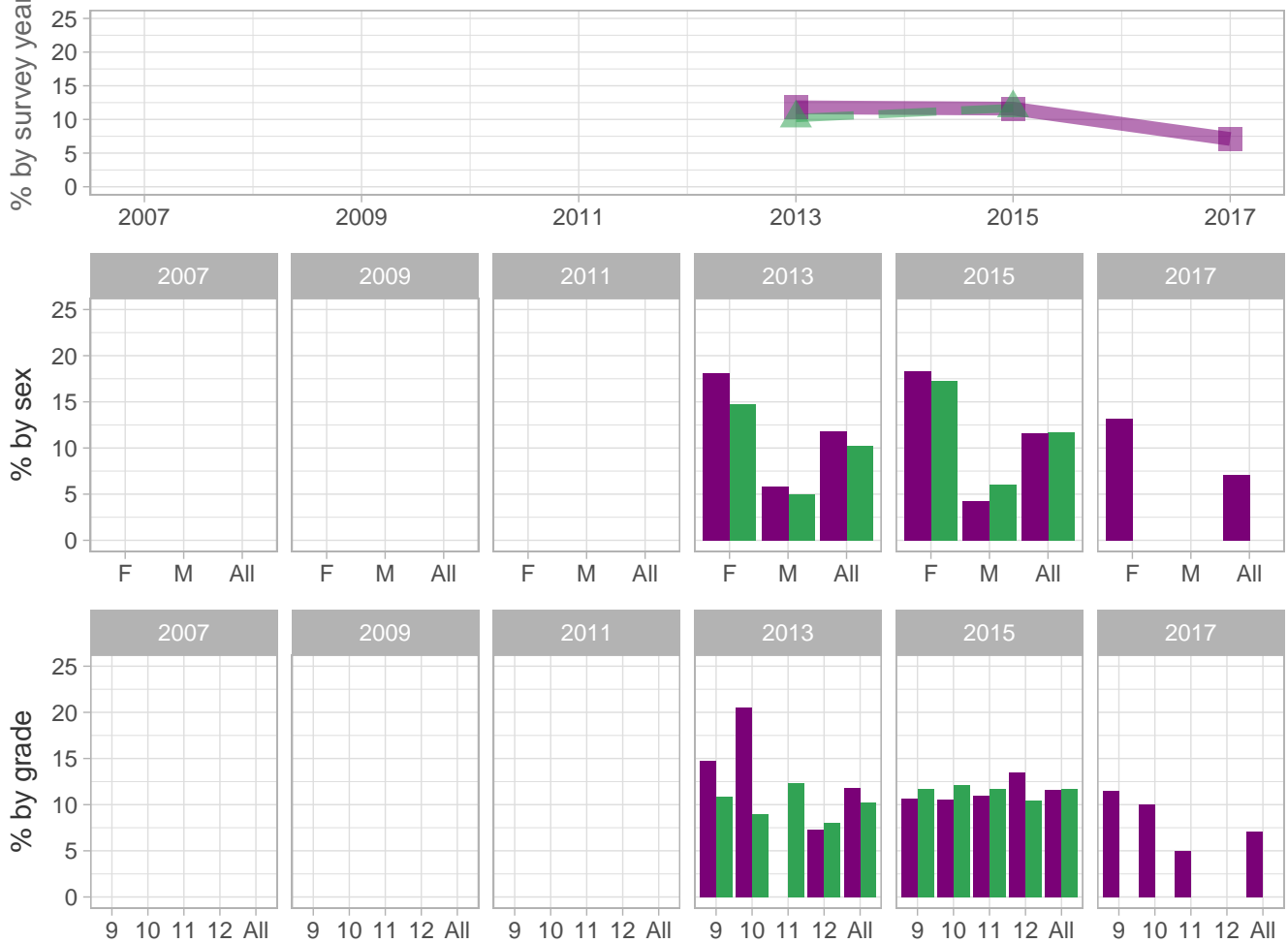
Percent (pct): numerator: bcde; denominator: abcde; qid: 181; 2007q999; 2009q999; 2011q999; 2013q999; 2015q999; 2017q21; Number (n): Estimated number of students projected based on school enrollment data.

-: Data not available; *: Suppressed due to small cell sizes.



Sexual and Dating Violence

Percent of students who experienced sexual dating violence (among students who dated or went out with someone) during the past 12 months



School-level by Sex and Grade

		2009(pct)	2011(pct)	2013(pct)	2015(pct)	2017(pct)	2017(n)
By sex	F	-	-	18.1	18.3	13.2	34
	M	-	-	5.8	4.3	*	*
By grade	9th	-	-	14.8	10.7	11.5	12
	10th	-	-	20.5	10.5	10.0	12
	11th	-	-	*	11.0	5.0	8
	12th	-	-	7.3	13.5	*	*
All	All	-	-	11.8	11.6	7.1	37

How the question was actually asked: During the past 12 months, how many times did someone you were dating or going out with force you to do sexual things that you did not want to do? (Count such things as kissing, touching, or being physically forced to have sexual intercourse.); a: I did not date or go out with anyone during the past 12 months ; b: 0 times ; c: 1 time ; d: 2 or 3 times ; e: 4 or 5 times ; f: 6 or more times;

Percent (pct): numerator: cdef; denominator: bcdef; qid: 146; 2007q999; 2009q999; 2011q999; 2013q20; 2015q19; 2017q22;

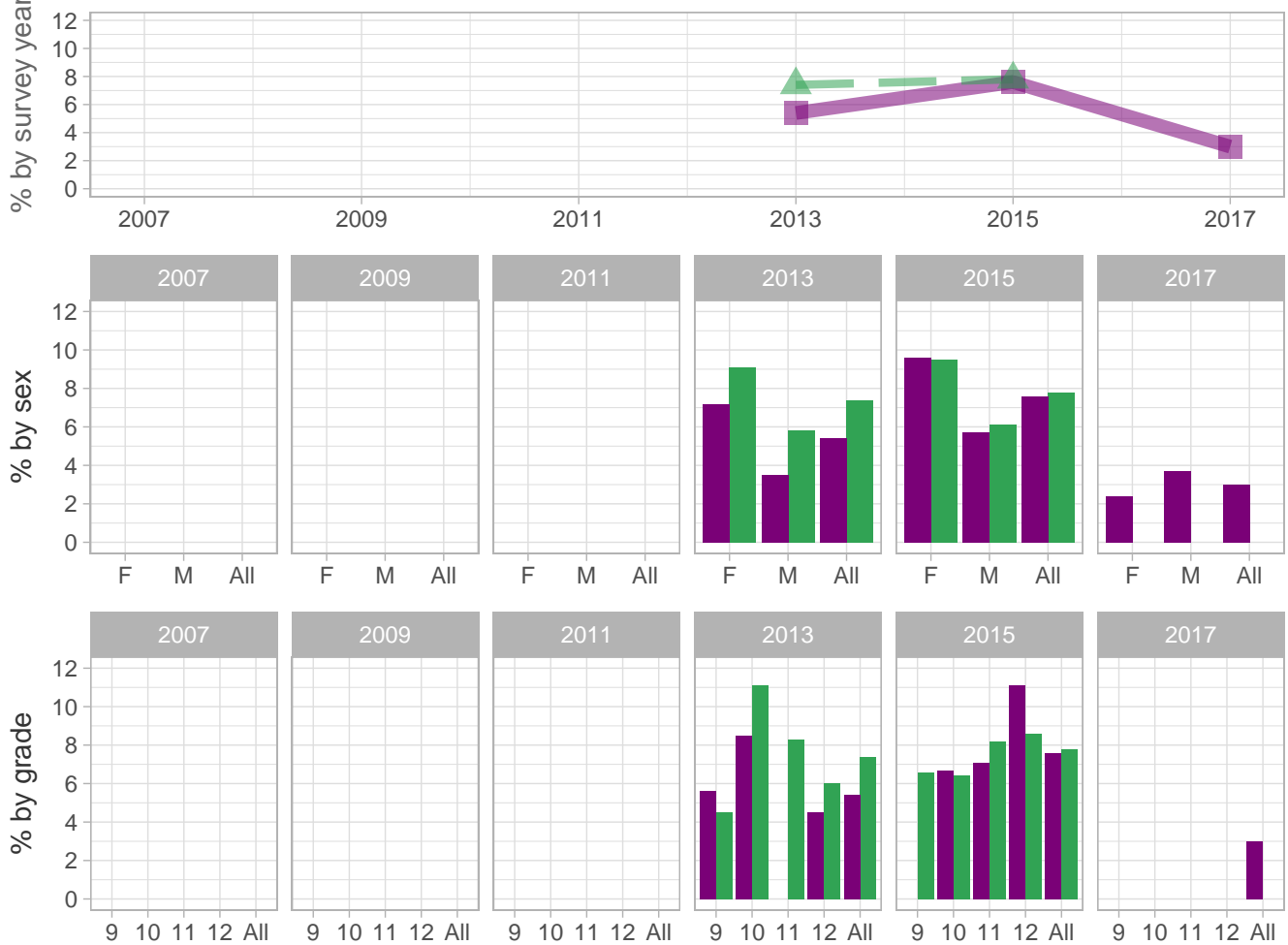
Number (n): Estimated number of students projected based on school enrollment data.

-: Data not available; *: Suppressed due to small cell sizes.



Sexual and Dating Violence

Percent of students who experienced physical dating violence (among students who dated or went out with someone) during the past 12 months



School-level by Sex and Grade

		2009(pct)	2011(pct)	2013(pct)	2015(pct)	2017(pct)	2017(n)
By sex	F	-	-	7.2	9.6	2.4	6
	M	-	-	3.5	5.7	3.7	10
By grade	9th	-	-	5.6	*	*	*
	10th	-	-	8.5	6.7	*	*
	11th	-	-	*	7.1	*	*
	12th	-	-	4.5	11.1	*	*
All	All	-	-	5.4	7.6	3.0	16

How the question was actually asked: During the past 12 months, how many times did someone you were dating or going out with physically hurt you on purpose? (Count such things as being hit, slammed into something, or injured with an object or weapon.); a: I did not date or go out with anyone during the past 12 months ; b: 0 times ; c: 1 time ; d: 2 or 3 times ; e: 4 or 5 times ; f: 6 or more times;

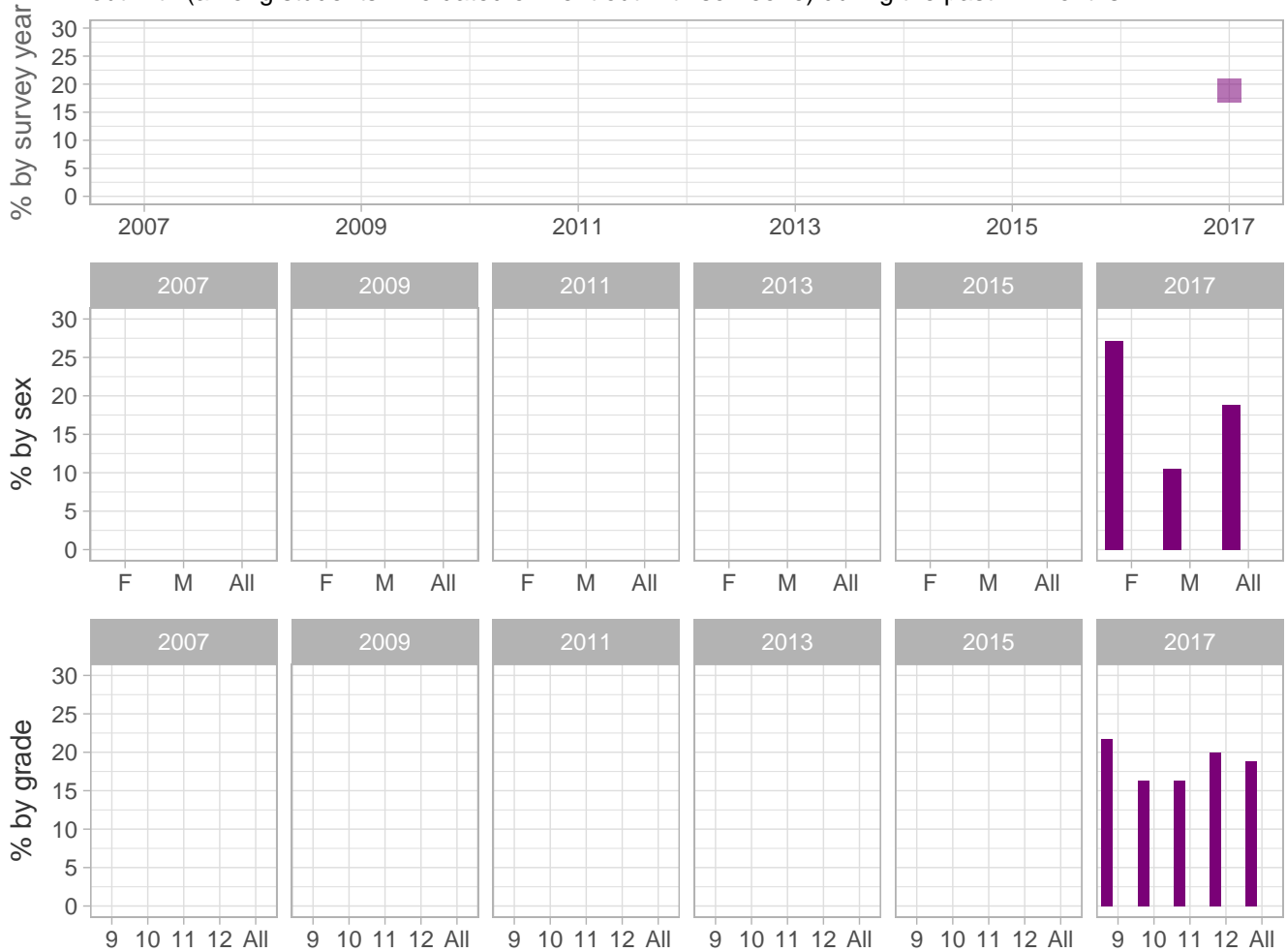
Percent (pct): numerator: cdef; denominator: bcdef; qid: 145; 2007q999; 2009q999; 2011q999; 2013q19; 2015q21; 2017q23; Number (n): Estimated number of students projected based on school enrollment data.

-: Data not available; *: Suppressed due to small cell sizes.



Sexual and Dating Violence

Percent of students who were controlled or emotionally hurt by someone they were dating or going out with (among students who dated or went out with someone) during the past 12 months



School-level by Sex and Grade

		2009(pct)	2011(pct)	2013(pct)	2015(pct)	2017(pct)	2017(n)
By sex	F	-	-	-	-	27.1	68
	M	-	-	-	-	10.5	28
By grade	9th	-	-	-	-	21.7	24
	10th	-	-	-	-	16.3	20
	11th	-	-	-	-	16.3	24
	12th	-	-	-	-	20.0	30
All	All	-	-	-	-	18.8	98

How the question was actually asked: During the past 12 months, how many times did someone you were dating or going out with purposely try to control you or emotionally hurt you? (Count such things as being told who you could and could not spend time with, being humiliated in front of others, or being threatened if you did not do what they wanted.); a: I did not date or go out with anyone during the past 12 months ; b: 0 times ; c: 1 time ; d: 2 or 3 times ; e: 4 or 5 times ; f: 6 or more times;

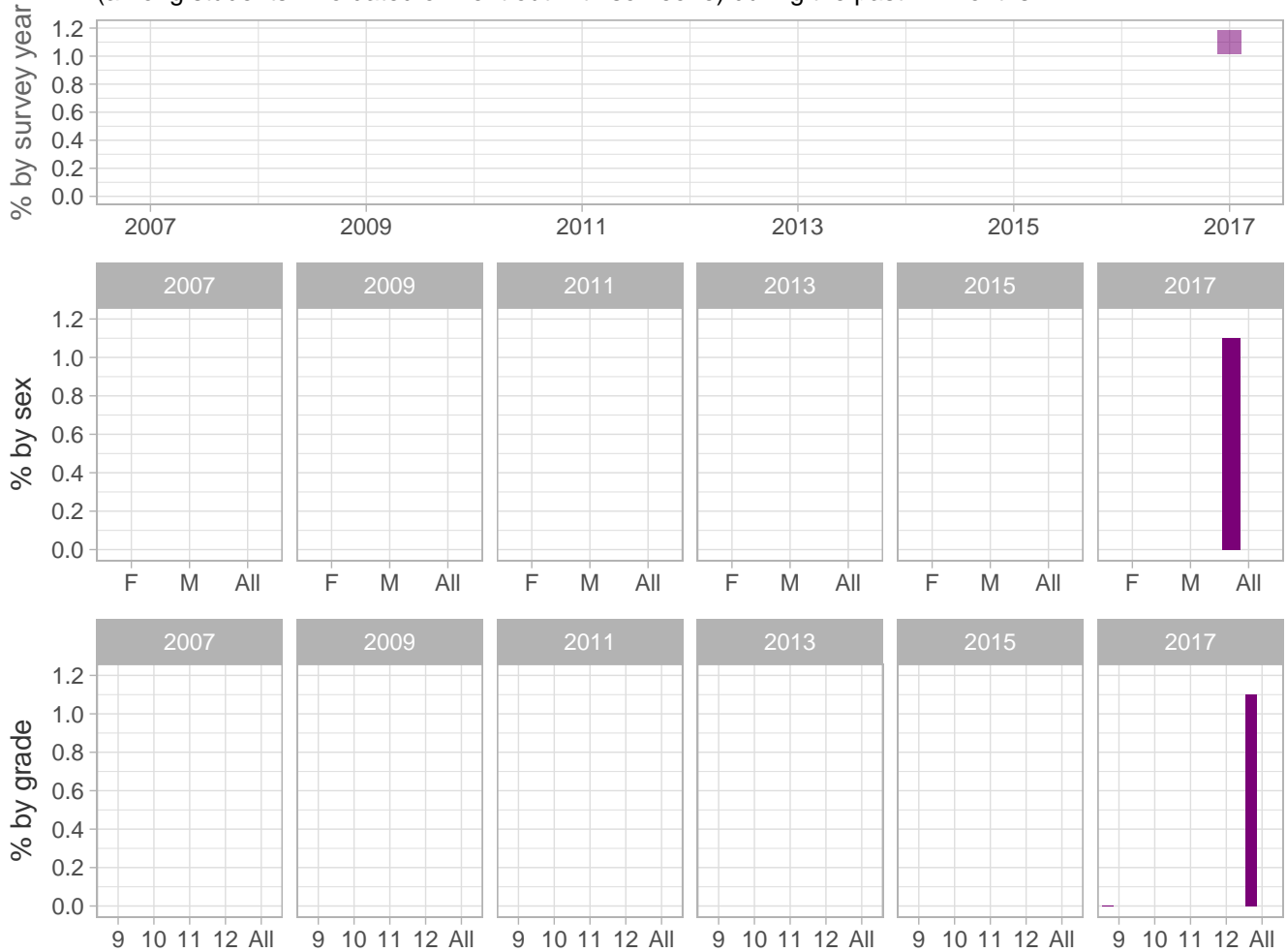
Percent (pct): numerator: cdef; denominator: bdef; qid: 182; 2007q999; 2009q999; 2011q999; 2013q999; 2015q999; 2017q24; Number (n): Estimated number of students projected based on school enrollment data.

-: Data not available; *: Suppressed due to small cell sizes.



Sexual and Dating Violence

Percent of students who ever forced someone they were dating or going out with to do sexual things (among students who dated or went out with someone) during the past 12 months



School-level by Sex and Grade

		2009(pct)	2011(pct)	2013(pct)	2015(pct)	2017(pct)	2017(n)
By sex	F	-	-	-	-	*	*
	M	-	-	-	-	*	*
By grade	9th	-	-	-	-	0.0	0
	10th	-	-	-	-	*	*
	11th	-	-	-	-	*	*
	12th	-	-	-	-	*	*
All	All	-	-	-	-	1.1	6

How the question was actually asked: During the past 12 months, did you ever force someone you were dating or going out with to do sexual things that they did not want to do? (Count such things as kissing, touching, or physically forcing them to have sexual intercourse.); a: I did not date or go out with anyone during the past 12 months ; b: Yes ; c: No;

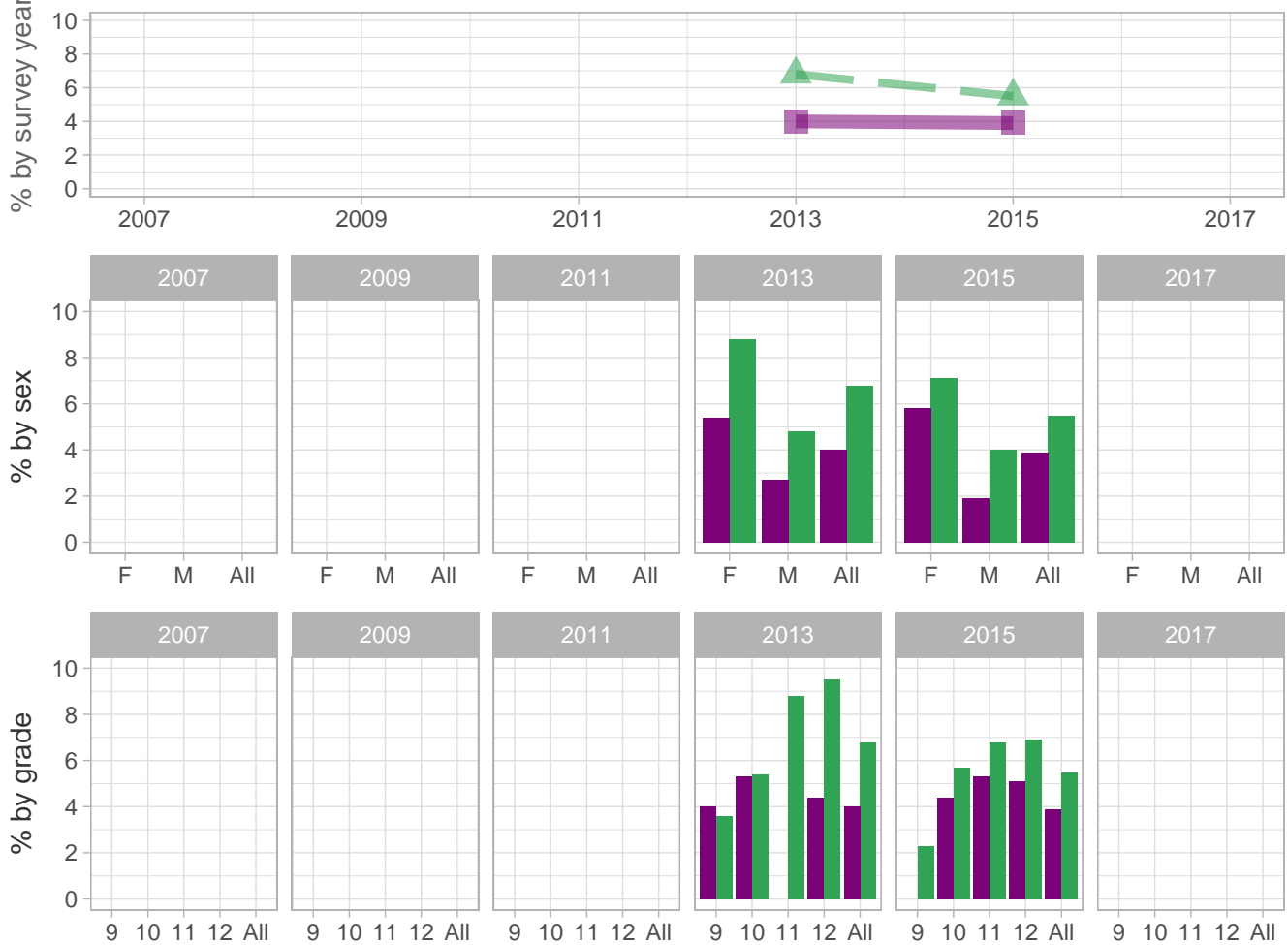
Percent (pct): numerator: b; denominator: bc; qid: 183; 2007q999; 2009q999; 2011q999; 2013q999; 2015q999; 2017q25;
 Number (n): Estimated number of students projected based on school enrollment data.

-: Data not available; *: Suppressed due to small cell sizes.



Sexual and Dating Violence

Percent of students who experienced unwanted sexual advances one or more times due to another students' drinking during the past 12 months



School-level by Sex and Grade

		2009(pct)	2011(pct)	2013(pct)	2015(pct)	2017(pct)	2017(n)
By sex	F	-	-	5.4	5.8	-	-
	M	-	-	2.7	1.9	-	-
By grade	9th	-	-	4.0	*	-	-
	10th	-	-	5.3	4.4	-	-
	11th	-	-	*	5.3	-	-
	12th	-	-	4.4	5.1	-	-
All	All	-	-	4.0	3.9	-	-

How the question was actually asked: During the past 12 months, how many times have you experienced an unwanted sexual advance because of another student's drinking?; a: I did not experience an unwanted sexual advance during the past 12 months; b: 0 times; c: 1 time; d: 2 or 3 times; e: 4 or 5 times; f: 6 or more times;

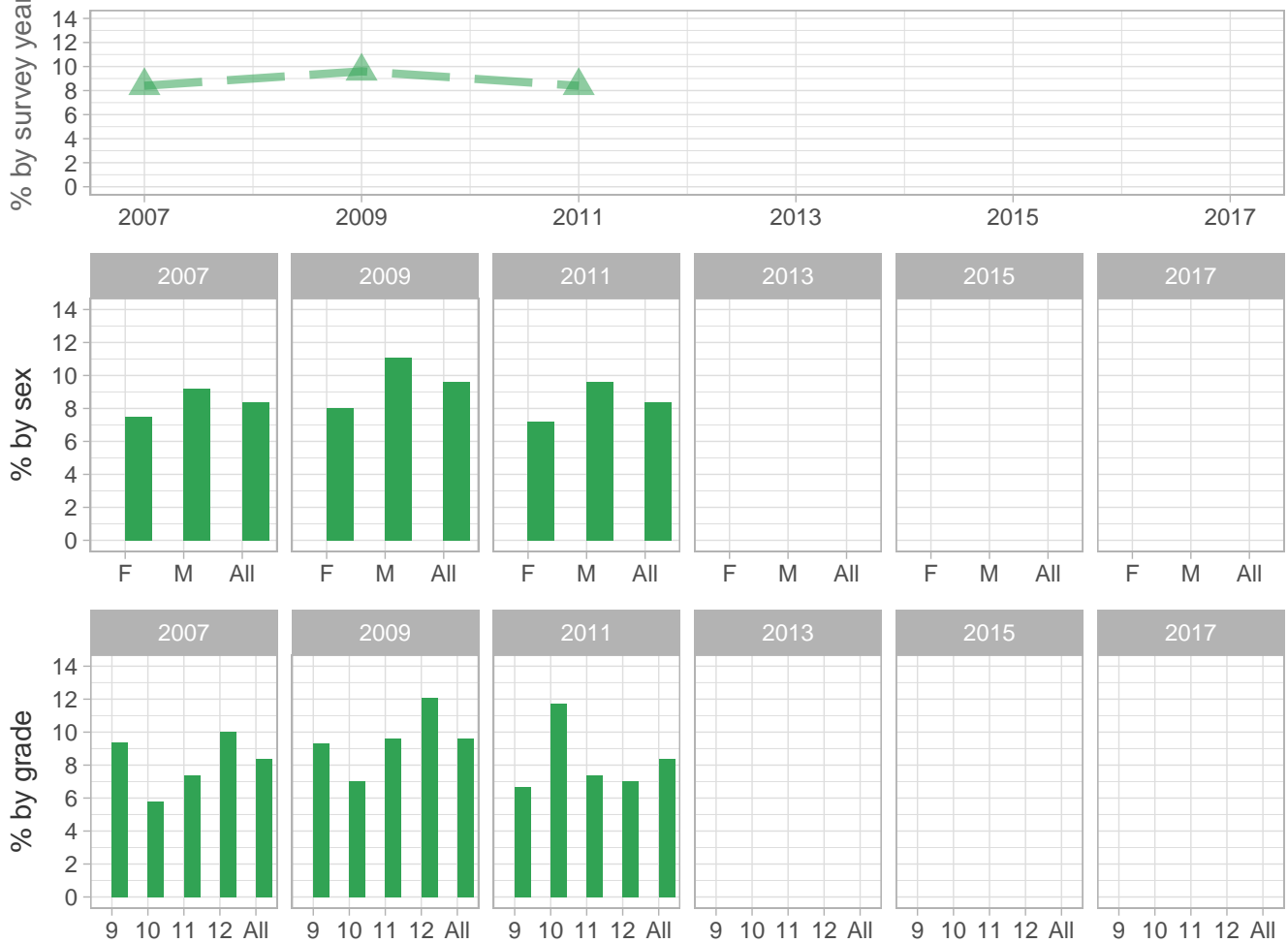
Percent (pct): numerator: cdef; denominator: abcdef; qid: 147; 2007q999; 2009q999; 2011q999; 2013q21; 2015q20; 2017q999; Number (n): Estimated number of students projected based on school enrollment data.

-: Data not available; *: Suppressed due to small cell sizes.



Sexual and Dating Violence

Percent of students who were ever hit, slapped, or physically hurt on purpose by their boyfriend or girlfriend during the past 12 months



School-level by Sex and Grade

		2009(pct)	2011(pct)	2013(pct)	2015(pct)	2017(pct)	2017(n)
By sex	F	-	*	-	-	-	-
	M	-	*	-	-	-	-
By grade	9th	-	*	-	-	-	-
	10th	-	*	-	-	-	-
	11th	-	-	-	-	-	-
	12th	-	-	-	-	-	-
All	All	-	*	-	-	-	-

How the question was actually asked: During the past 12 months, did your boyfriend or girlfriend ever hit, slap, or physically hurt you on purpose?; a: Yes; b: No;

Percent (pct): numerator: a; denominator: ab; qid: 22; 2007q22; 2009q18; 2011q18; 2013q999; 2015q999; 2017q999;

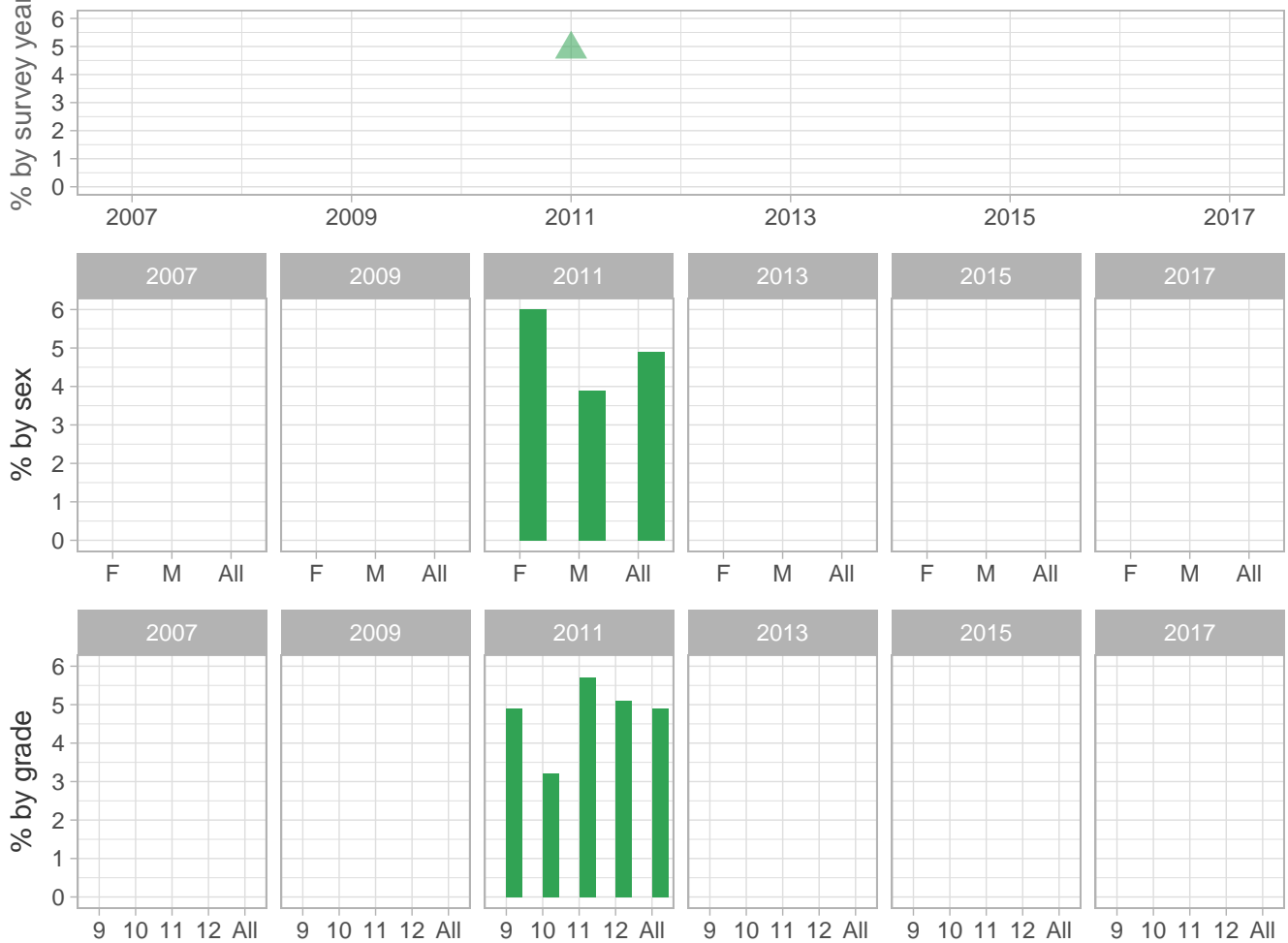
Number (n): Estimated number of students projected based on school enrollment data.

-: Data not available; *: Suppressed due to small cell sizes.



Sexual and Dating Violence

Percent of students who experienced unwanted sexual advances due to another students' drinking during the past 12 months



School-level by Sex and Grade

		2009(pct)	2011(pct)	2013(pct)	2015(pct)	2017(pct)	2017(n)
By sex	F	-	*	-	-	-	-
	M	-	*	-	-	-	-
By grade	9th	-	*	-	-	-	-
	10th	-	*	-	-	-	-
	11th	-	-	-	-	-	-
	12th	-	-	-	-	-	-
All	All	-	*	-	-	-	-

How the question was actually asked: During the past 12 months, have you experienced an unwanted sexual advance because of other students' drinking?; a: Yes; b: No;

Percent (pct): numerator: a; denominator: ab; qid: 125; 2007q999; 2009q999; 2011q19; 2013q999; 2015q999; 2017q999;

Number (n): Estimated number of students projected based on school enrollment data.

-: Data not available; *: Suppressed due to small cell sizes.