

# Windham High School: 2017 NH YRBS Preliminary Report

---

## Drug Use Perceptions and Understanding: Time Trends, By Sex, and By Grade

Windham High School is in the Greater Derry Public Health Region and is served by the Bridges crisis center.

### PRELIMINARY RESULTS (v1.2)

This report contains preliminary results for 2017. All 2017 results are subject to change when the CDC returns the final dataset to the State, expected in early 2018. Please use caution when referring to and using these preliminary data until the final data set is received from the CDC. This report contains results for all questions asked on any YRBS survey since 2007. Note, access to regional level results were first made available in 2015 and are not available prior to that year.

### State and Regional Estimates

State and Regional estimates are calculated from a random sample developed using scientific survey methods. These methods ensure the respondents are representative of students in the region in the State. These estimates account for student, classroom, school, and regional factors. The random sample is not designed to provide school level estimates.

### School Level Estimates

The 2017 survey response rate at Windham High School was 87% where 786 of 901 students took the survey. **School level estimates are unweighted and based on a convenience sample of students in attendance, and not opting out of participation in the YRBS, on a given date and time during the school year.** However, because participation was relatively high the school estimates may still be representative of the entire school population. Results could be less representative if specific classrooms or classroom types were not included in the survey. We have attempted to estimate how many students in the school actually fall within each risk category. We did this by scaling up the students responding in the survey using school enrollment data.

Estimates number and percentage were suppressed (\*) if the underlying sample size was <60 respondents and/or cell sizes are between 1 and 5.

### Help and assistance

#### Questions on this report (NH YRBS Community level preliminary report)

Health Statistics and Data Management  
Division of Public Health Services - State of NH  
NH.YouthRiskBehaviorSurvey@dhhs.nh.gov; (603) 271-4988;

#### Additional technical assistance for YRBS related information

NH Center for Excellence  
nhcenterforexcellence@jsi.com; (603) 573-3300  
<http://nhcenterforexcellence.org/center-services/request-ta/>

### Change Log

**v1.2:** Indicators revised to display by CDC question direction as greater risk; and, revised methodology to more accurately display number of students projected based on school enrollment data.

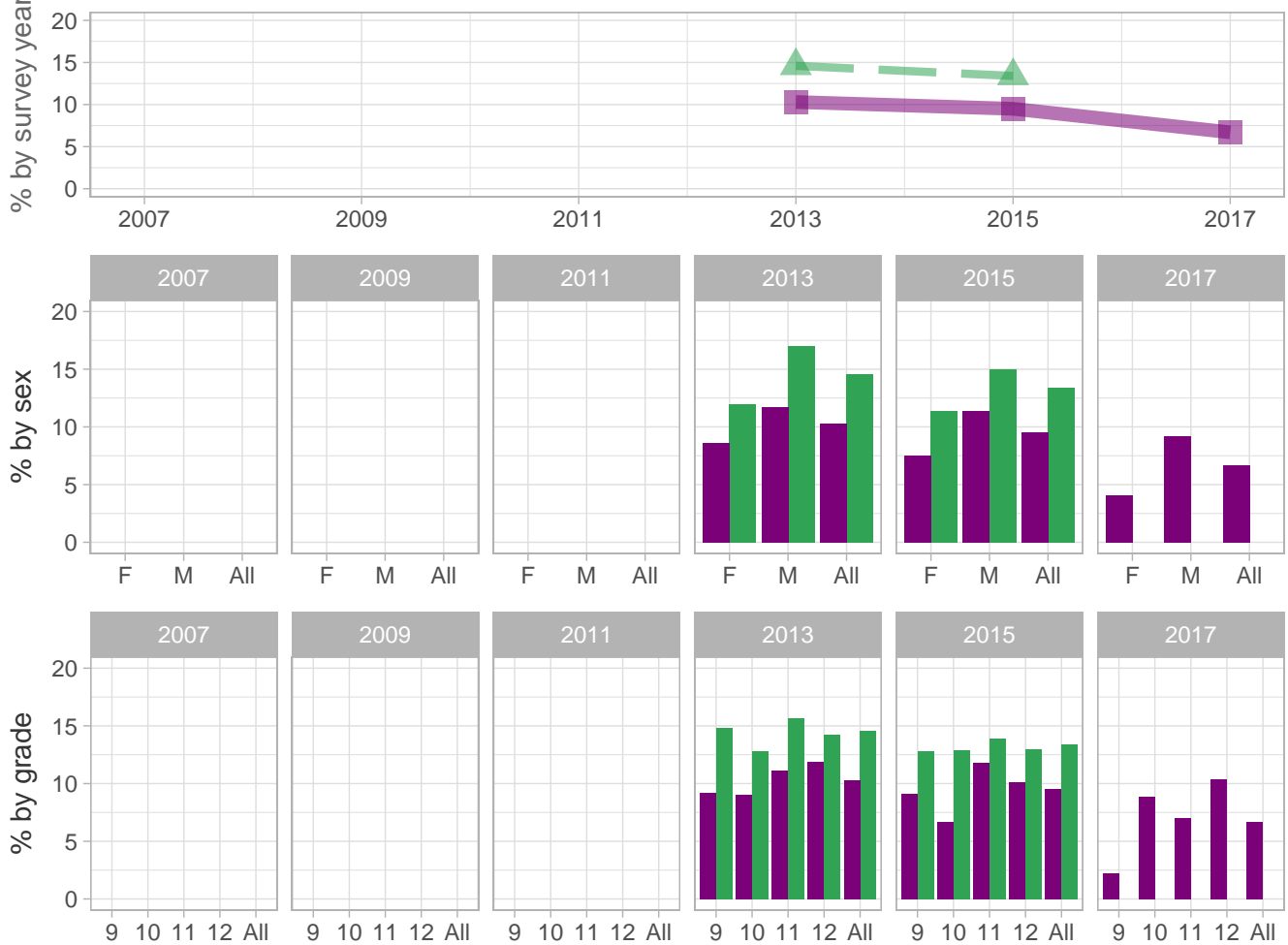
**v1.1:** School estimates corrected to include CDC sample - report sent 8/31-9/1

**v1.0:** Initial report sent 8/29



### Drug Use Perceptions and Understanding

Percent of students who did not hear, read or see a public message about avoiding alcohol or other illegal drugs during the past 12 months



School-level by Sex and Grade

		2009(pct)	2011(pct)	2013(pct)	2015(pct)	2017(pct)	2017(n)
<b>By sex</b>	F	-	-	8.6	7.5	4.1	18
	M	-	-	11.7	11.4	9.2	43
<b>By grade</b>	9th	-	-	9.2	9.1	2.2	6
	10th	-	-	9.0	6.7	8.9	20
	11th	-	-	11.1	11.8	7.0	16
	12th	-	-	11.9	10.1	10.4	20
<b>All</b>	All	-	-	10.3	9.5	6.7	61

How the question was actually asked: During the past 12 months, do you recall hearing, reading, or seeing a public message about avoiding alcohol or other illegal drugs?; a: Yes ; b: No ; c: Not sure;

Percent (pct): numerator: b; denominator: abc; qid: 188; 2007q999; 2009q999; 2011q999; 2013q99; 2015q78; 2017q53;

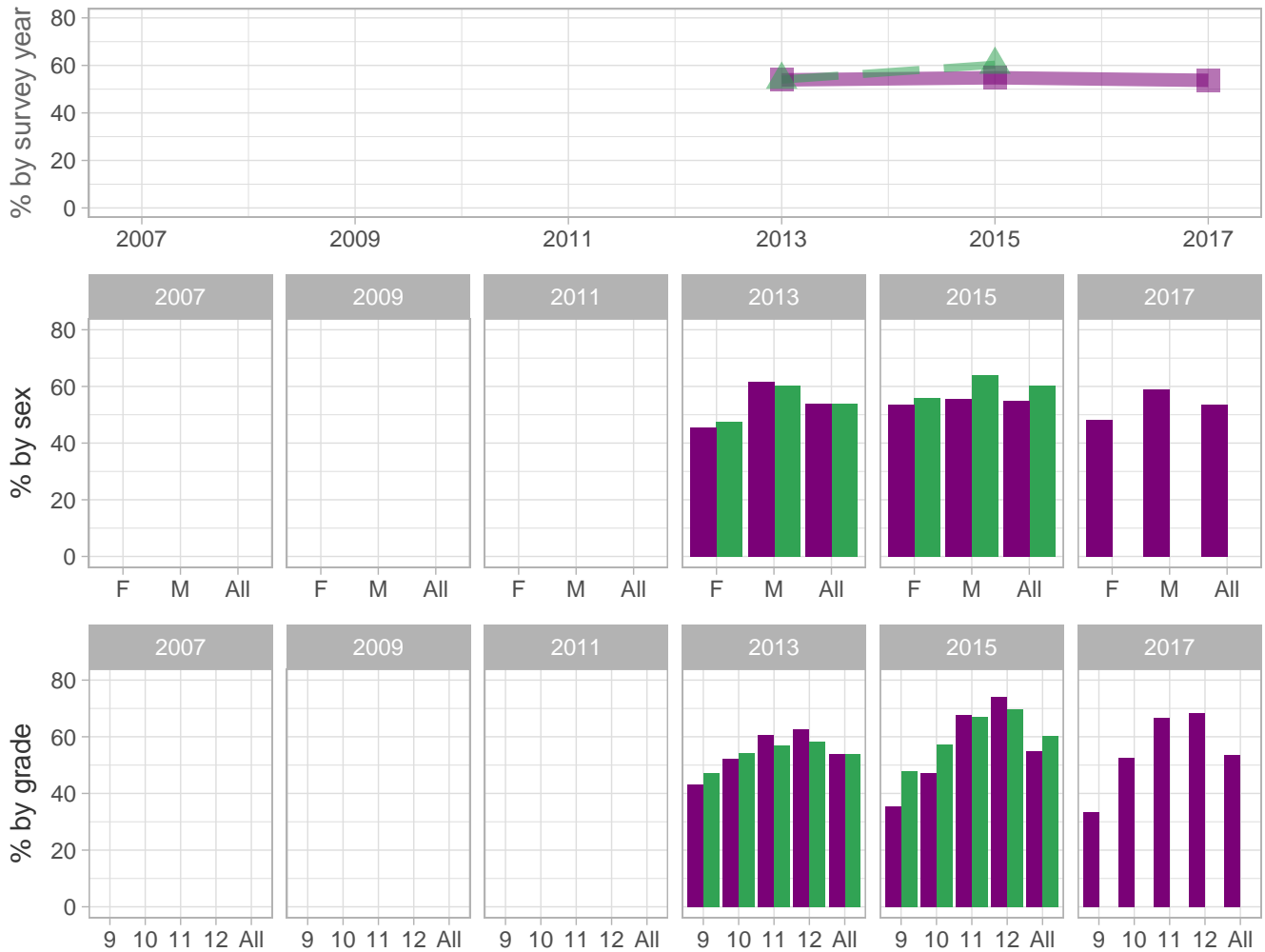
Number (n): Estimated number of students projected based on school enrollment data.

-: Data not available; \*: Suppressed due to small cell sizes.

 School  Region  NH

### Drug Use Perceptions and Understanding

Percent of students who perceive of no/slight risk from marijuana use once or twice a week



School-level by Sex and Grade

		2009(pct)	2011(pct)	2013(pct)	2015(pct)	2017(pct)	2017(n)
<b>By sex</b>	F	-	-	45.5	53.5	48.1	207
	M	-	-	61.7	55.7	58.9	273
<b>By grade</b>	9th	-	-	43.1	35.4	33.3	89
	10th	-	-	52.1	47.2	52.6	118
	11th	-	-	60.8	67.6	66.7	145
	12th	-	-	62.7	74.1	68.5	130
<b>All</b>	All	-	-	53.9	54.8	53.7	485

How the question was actually asked: How much do you think people risk harming themselves (physically or in other ways) if they use marijuana once or twice a week?; a: No risk ; b: Slight risk ; c: Moderate risk ; d: Great risk;

Percent (pct): numerator: ab; denominator: abcd; qid: 160; 2007q999; 2009q999; 2011q999; 2013q83; 2015q85; 2017q86;

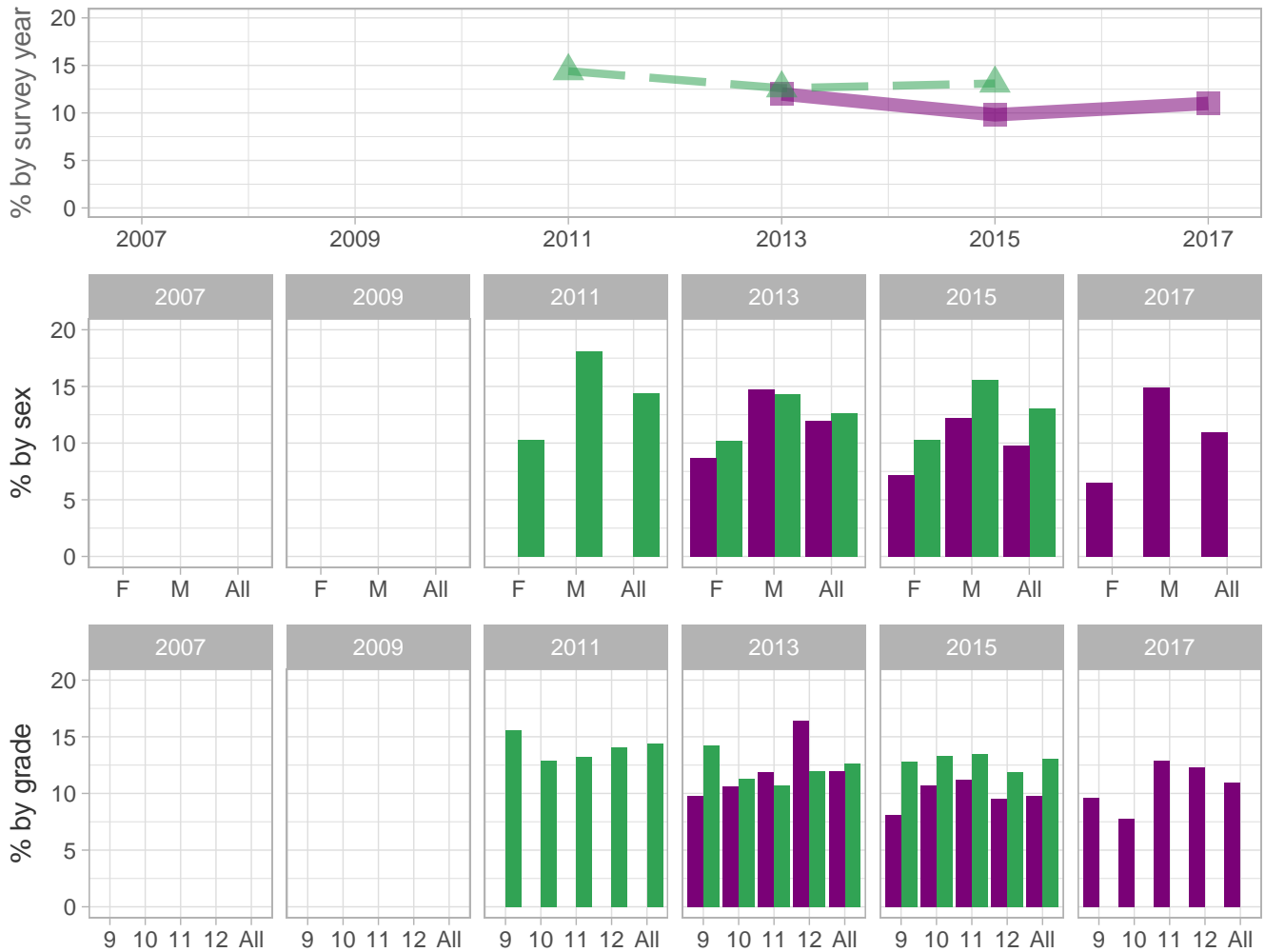
Number (n): Estimated number of students projected based on school enrollment data.

-: Data not available; \*: Suppressed due to small cell sizes.

 School  Region  NH

### Drug Use Perceptions and Understanding

Percent of students who perceive of no/slight risk from taking Rx drug without a doctor's Rx



School-level by Sex and Grade

		2009(pct)	2011(pct)	2013(pct)	2015(pct)	2017(pct)	2017(n)
<b>By sex</b>	F	-	*	8.7	7.2	6.5	28
	M	-	*	14.7	12.2	14.9	69
<b>By grade</b>	9th	-	*	9.8	8.1	9.6	26
	10th	-	*	10.6	10.7	7.8	18
	11th	-	-	11.9	11.2	12.9	28
	12th	-	-	16.4	9.5	12.3	24
<b>All</b>	All	-	*	12.0	9.8	11.0	99

How the question was actually asked: How much do you think people risk harming themselves (physically or in other ways) if they take a prescription drug (such as OxyContin, Percocet, Vicodin, codeine, Adderall, Ritalin, or Xanax) without a doctor's prescription?; a: No risk ; b: Slight risk ; c: Moderate risk ; d: Great risk;

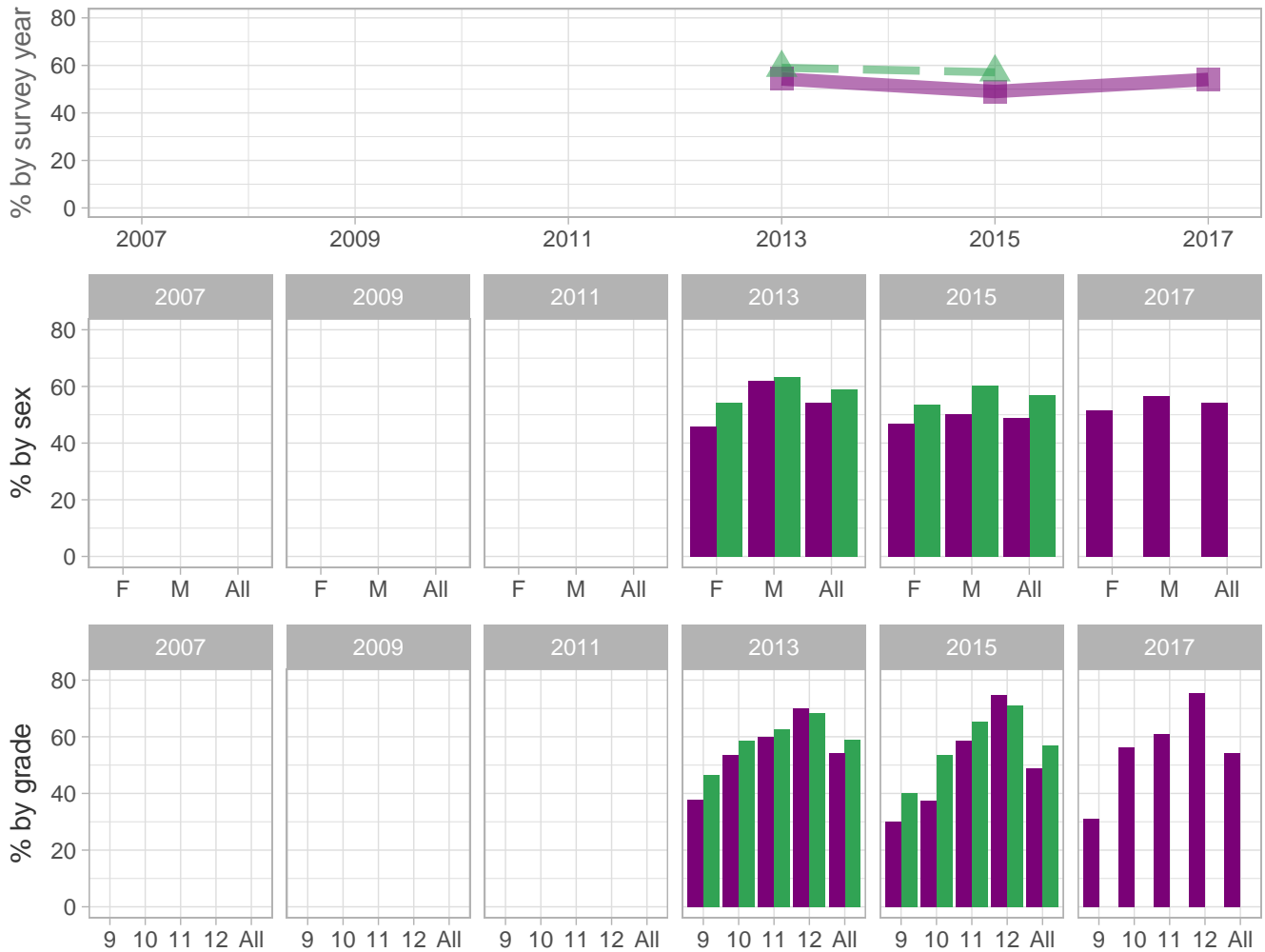
Percent (pct): numerator: ab; denominator: abcd; qid: 161; 2007q999; 2009q999; 2011q85; 2013q84; 2015q86; 2017q87; Number (n): Estimated number of students projected based on school enrollment data.

-: Data not available; \*: Suppressed due to small cell sizes.

 School  Region  NH

### Drug Use Perceptions and Understanding

Percent of students who perceive that peers do not think it is wrong to use marijuana



School-level by Sex and Grade

		2009(pct)	2011(pct)	2013(pct)	2015(pct)	2017(pct)	2017(n)
<b>By sex</b>	F	-	-	46.0	46.8	51.5	222
	M	-	-	61.9	50.3	56.5	260
<b>By grade</b>	9th	-	-	37.7	30.0	31.1	83
	10th	-	-	53.7	37.6	56.2	126
	11th	-	-	60.1	58.6	61.1	132
	12th	-	-	70.1	74.7	75.3	143
<b>All</b>	All	-	-	54.3	49.0	54.1	488

How the question was actually asked: How wrong do your friends feel it would be for you to smoke marijuana?; a: Very wrong ; b: Wrong ; c: A little bit wrong ; d: Not at all wrong ; e: Not sure;

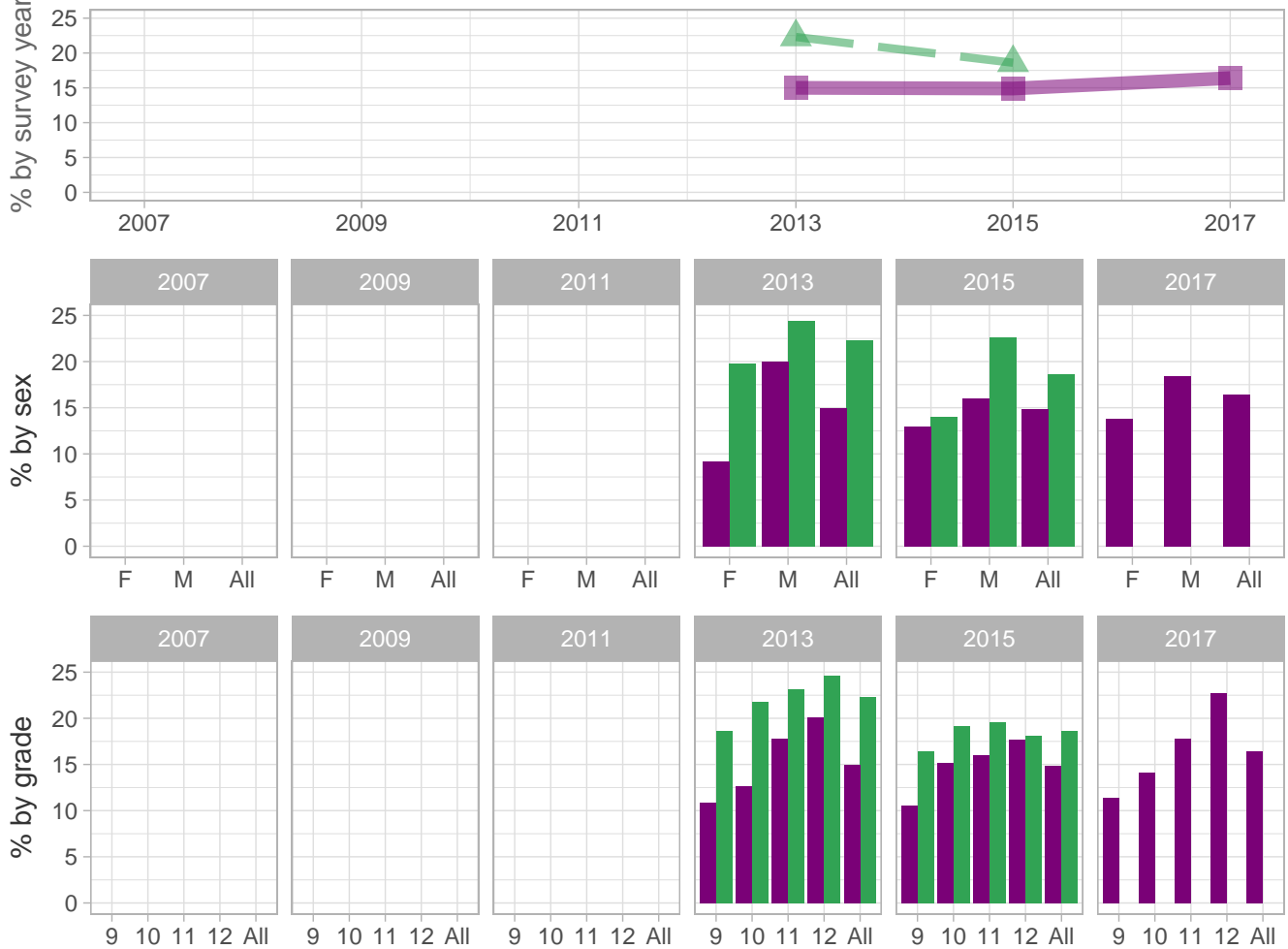
Percent (pct): numerator: cde; denominator: abcde; qid: 164; 2007q999; 2009q999; 2011q999; 2013q87; 2015q89; 2017q90; Number (n): Estimated number of students projected based on school enrollment data.

-: Data not available; \*: Suppressed due to small cell sizes.

 School  Region  NH

### Drug Use Perceptions and Understanding

Percent of students who perceive that peers do not think it is wrong take Rx drug without a doctor's Rx



School-level by Sex and Grade

		2009(pct)	2011(pct)	2013(pct)	2015(pct)	2017(pct)	2017(n)
<b>By sex</b>	F	-	-	9.2	13.0	13.8	60
	M	-	-	20.0	16.0	18.4	85
<b>By grade</b>	9th	-	-	10.9	10.5	11.4	31
	10th	-	-	12.6	15.2	14.1	32
	11th	-	-	17.8	16.0	17.8	39
	12th	-	-	20.1	17.7	22.7	44
<b>All</b>	All	-	-	15.0	14.9	16.4	148

How the question was actually asked: How wrong do your friends feel it would be for you to take a prescription drug (such as OxyContin, Percocet, Vicodin, codeine, Adderall, Ritalin, or Xanax) without a doctor's prescription?; a: Very wrong ; b: Wrong ; c: A little bit wrong ; d: Not at all wrong ; e: Not sure;

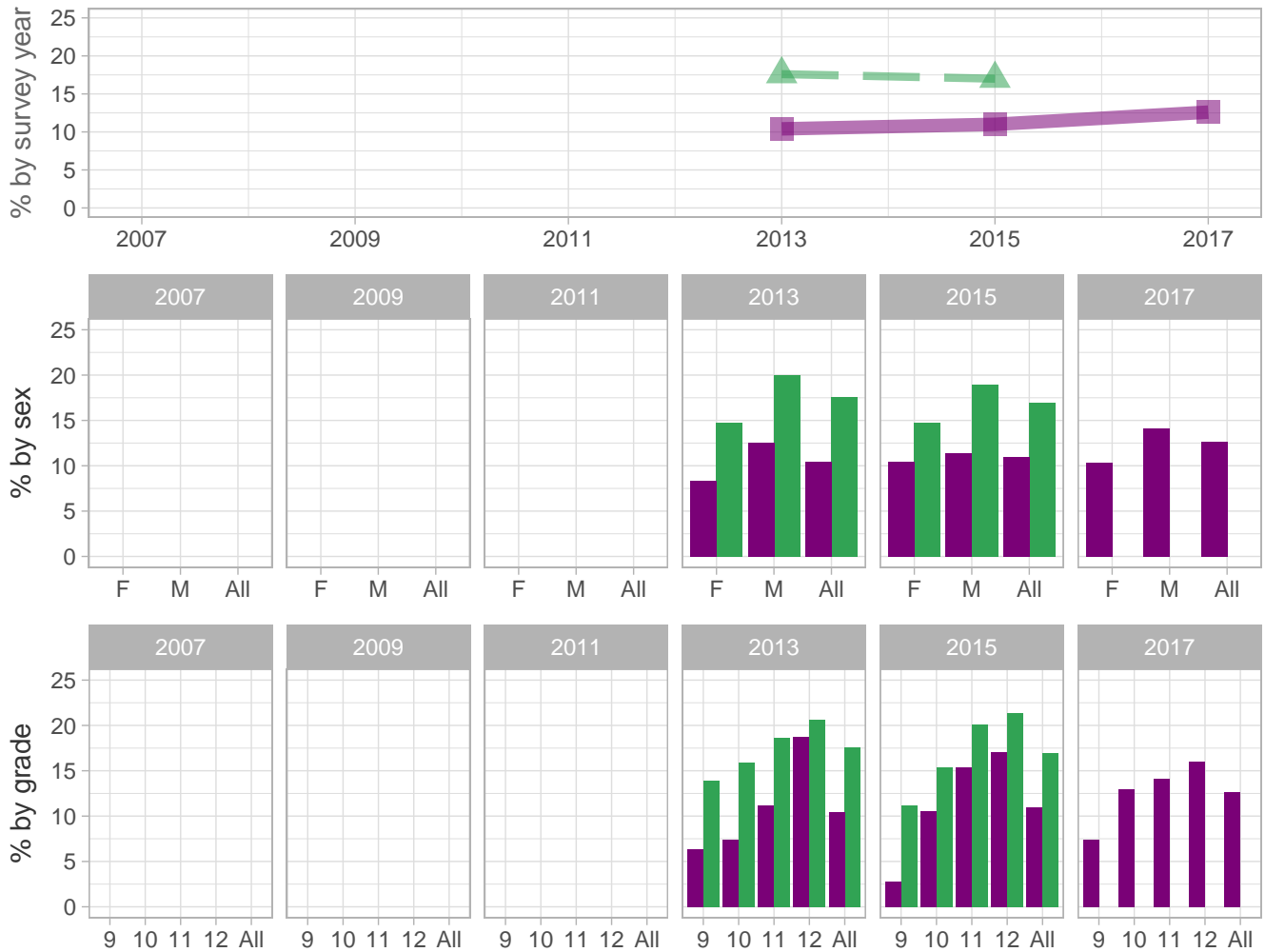
Percent (pct): numerator: cde; denominator: abcde; qid: 165; 2007q999; 2009q999; 2011q999; 2013q88; 2015q90; 2017q91; Number (n): Estimated number of students projected based on school enrollment data.

-: Data not available; \*: Suppressed due to small cell sizes.



### Drug Use Perceptions and Understanding

Percent of students who perceive that parents do not think it is wrong for youth to use marijuana



School-level by Sex and Grade

		2009(pct)	2011(pct)	2013(pct)	2015(pct)	2017(pct)	2017(n)
<b>By sex</b>	F	-	-	8.3	10.4	10.3	45
	M	-	-	12.5	11.4	14.1	66
<b>By grade</b>	9th	-	-	6.3	2.8	7.4	20
	10th	-	-	7.4	10.6	13.0	30
	11th	-	-	11.2	15.4	14.1	31
	12th	-	-	18.7	17.1	16.0	31
<b>All</b>	All	-	-	10.4	11.0	12.6	114

How the question was actually asked: How wrong do your parents feel it would be for you to smoke marijuana?; a: Very wrong ; b: Wrong ; c: A little bit wrong ; d: Not at all wrong ; e: Not sure;

Percent (pct): numerator: cde; denominator: abcde; qid: 168; 2007q999; 2009q999; 2011q999; 2013q91; 2015q93; 2017q94;

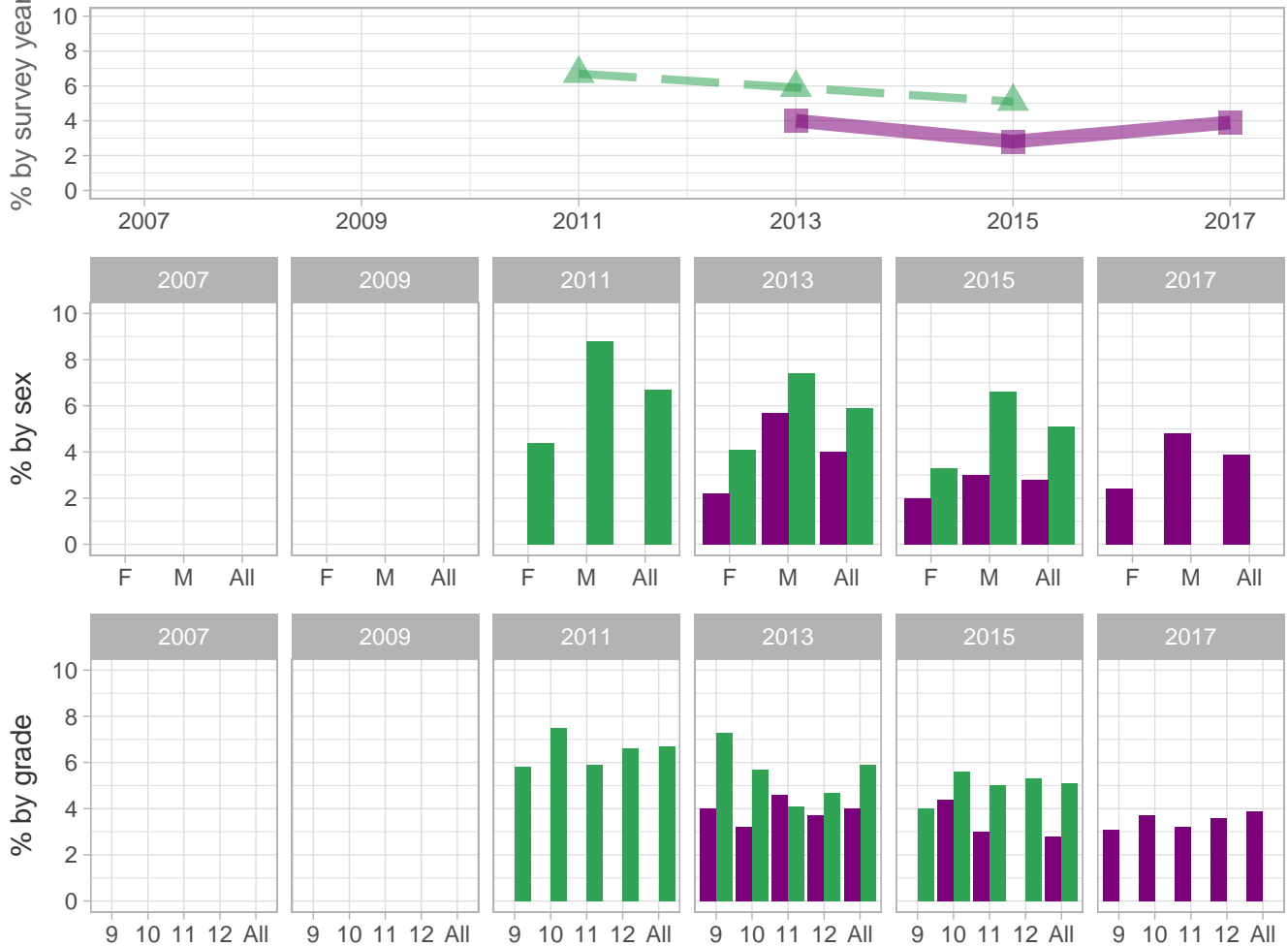
Number (n): Estimated number of students projected based on school enrollment data.

-: Data not available; \*: Suppressed due to small cell sizes.

 School  Region  NH

### Drug Use Perceptions and Understanding

Percent of students who perceive that parents do not think it is wrong to take Rx drug without a doctor's Rx



School-level by Sex and Grade

		2009(pct)	2011(pct)	2013(pct)	2015(pct)	2017(pct)	2017(n)
<b>By sex</b>	F	-	*	2.2	2.0	2.4	11
	M	-	*	5.7	3.0	4.8	23
<b>By grade</b>	9th	-	*	4.0	*	3.1	9
	10th	-	*	3.2	4.4	3.7	9
	11th	-	-	4.6	3.0	3.2	7
	12th	-	-	3.7	*	3.6	7
	<b>All</b>	All	-	*	4.0	2.8	3.9

How the question was actually asked: How wrong do your parents feel it would be for you to take a prescription drug (such as OxyContin, Percocet, Vicodin, codeine, Adderall, Ritalin, or Xanax) without a doctor's prescription?; a: Very wrong; b: Wrong; c: A little bit wrong; d: Not at all wrong; e: Not sure;

Percent (pct): numerator: cde; denominator: abcde; qid: 139; 2007q999; 2009q999; 2011q95; 2013q92; 2015q94; 2017q95; Number (n): Estimated number of students projected based on school enrollment data.

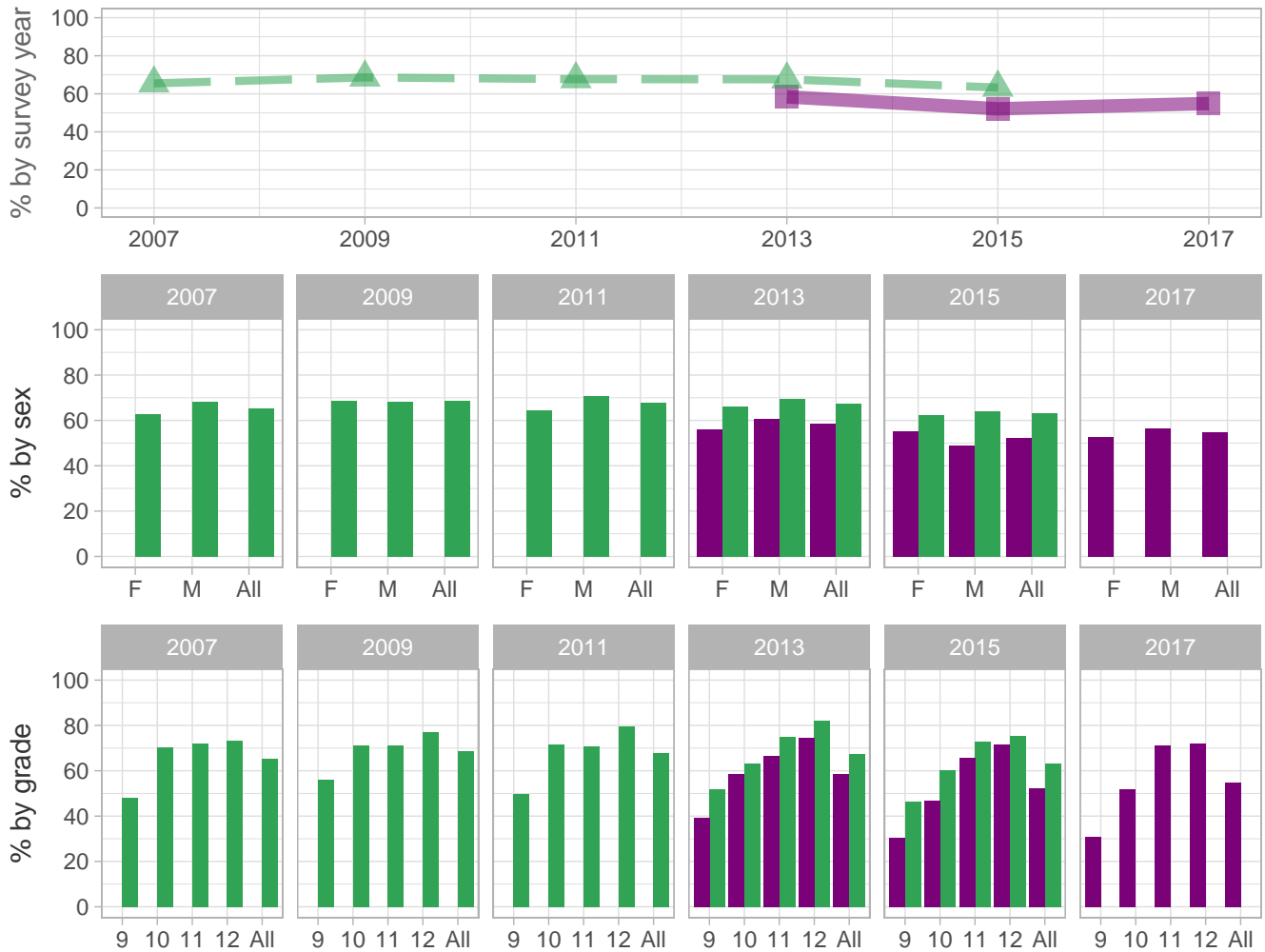
-: Data not available; \*: Suppressed due to small cell sizes.



 School  Region  NH

### Drug Use Perceptions and Understanding

Percent of students who perceived of easy or very easy access to marijuana



School-level by Sex and Grade

		2009(pct)	2011(pct)	2013(pct)	2015(pct)	2017(pct)	2017(n)
<b>By sex</b>	F	-	*	56.1	55.2	52.7	225
	M	-	*	60.8	48.8	56.3	261
<b>By grade</b>	9th	-	*	39.2	30.3	30.8	81
	10th	-	*	58.5	46.7	51.8	116
	11th	-	-	66.4	65.7	71.0	154
	12th	-	-	74.6	71.5	72.1	139
<b>All</b>	All	-	*	58.4	52.1	54.9	495

How the question was actually asked: If you wanted to get some marijuana, how hard or easy would it be for you to get some?; a: Very hard ; b: Sort of hard ; c: Sort of easy ; d: Very easy;

Percent (pct): numerator: cd; denominator: abcd; qid: 98; 2007q98; 2009q97; 2011q98; 2013q96; 2015q98; 2017q98;

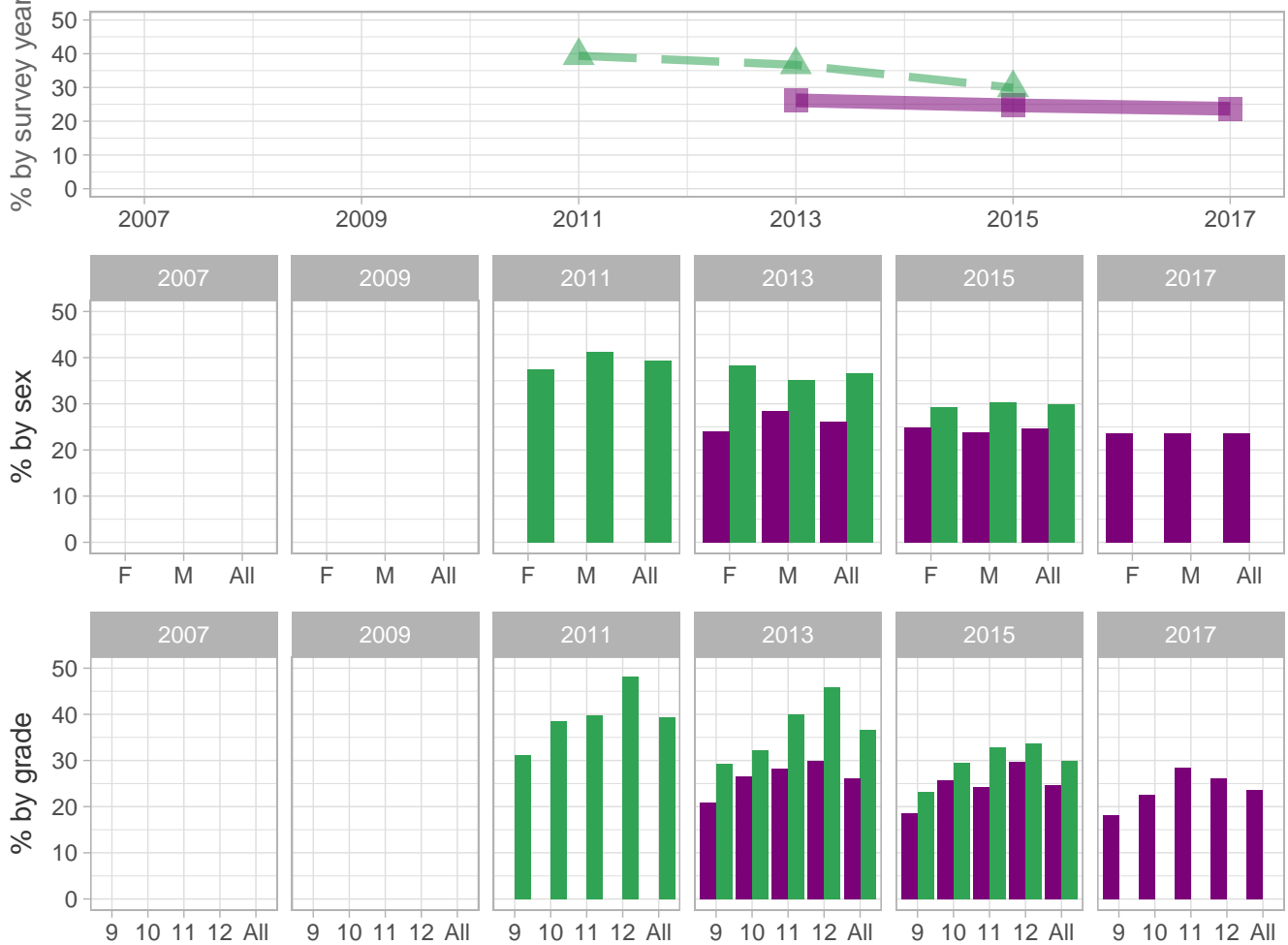
Number (n): Estimated number of students projected based on school enrollment data.

-: Data not available; \*: Suppressed due to small cell sizes.

 School  Region  NH

### Drug Use Perceptions and Understanding

Percent of students who perceived of easy or very easy access to prescription drugs without a prescription



School-level by Sex and Grade

		2009(pct)	2011(pct)	2013(pct)	2015(pct)	2017(pct)	2017(n)
<b>By sex</b>	F	-	*	24.0	24.9	23.7	102
	M	-	*	28.5	23.8	23.6	110
<b>By grade</b>	9th	-	*	20.9	18.5	18.2	48
	10th	-	*	26.5	25.7	22.5	50
	11th	-	-	28.3	24.3	28.5	62
	12th	-	-	29.9	29.7	26.1	50
<b>All</b>	All	-	*	26.2	24.7	23.7	214

How the question was actually asked: If you wanted to get a prescription drug (such as OxyContin, Percocet, Vicodin, codeine, Adderall, Ritalin, or Xanax) without a doctor's prescription, how hard or easy would it be for you to get some?; a: Very hard ; b: Sort of hard ; c: Sort of easy ; d: Very easy;

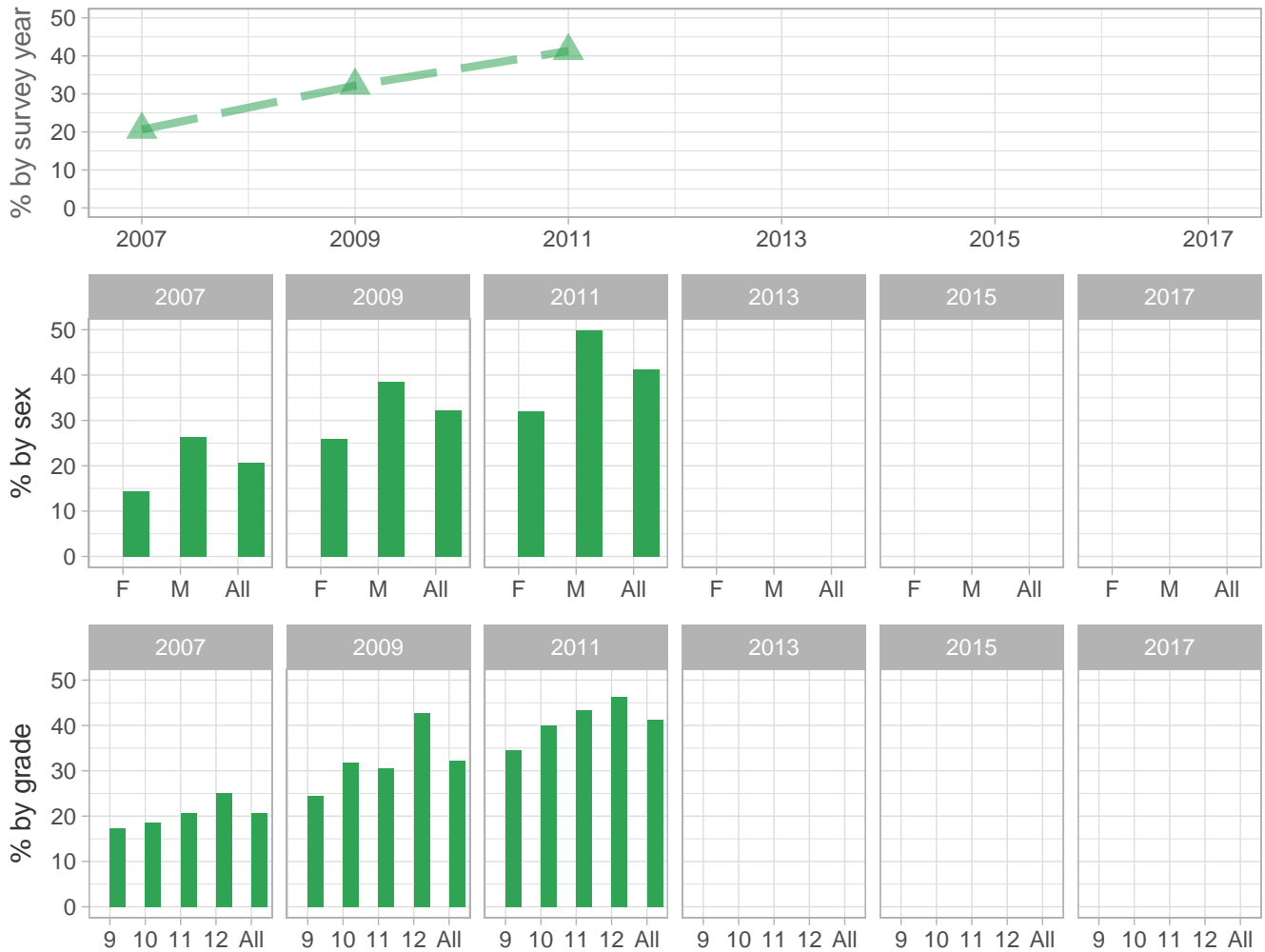
Percent (pct): numerator: cd; denominator: abcd; qid: 140; 2007q999; 2009q999; 2011q99; 2013q98; 2015q99; 2017q99; Number (n): Estimated number of students projected based on school enrollment data.

-: Data not available; \*: Suppressed due to small cell sizes.

 School  Region  NH

### Drug Use Perceptions and Understanding

Percent of students who perceive of no/slight risk from smoking marijuana regularly



School-level by Sex and Grade

		2009(pct)	2011(pct)	2013(pct)	2015(pct)	2017(pct)	2017(n)
<b>By sex</b>	F	-	*	-	-	-	-
	M	-	*	-	-	-	-
<b>By grade</b>	9th	-	*	-	-	-	-
	10th	-	*	-	-	-	-
	11th	-	-	-	-	-	-
	12th	-	-	-	-	-	-
<b>All</b>	All	-	*	-	-	-	-

How the question was actually asked: How much do you think people risk harming themselves (physically or in other ways), if they smoke marijuana regularly?; a: No risk; b: Slight risk; c: Moderate risk; d: Great risk;

Percent (pct): numerator: ab; denominator: abcd; qid: 118; 2007q83; 2009q83; 2011q83; 2013q999; 2015q999; 2017q999;

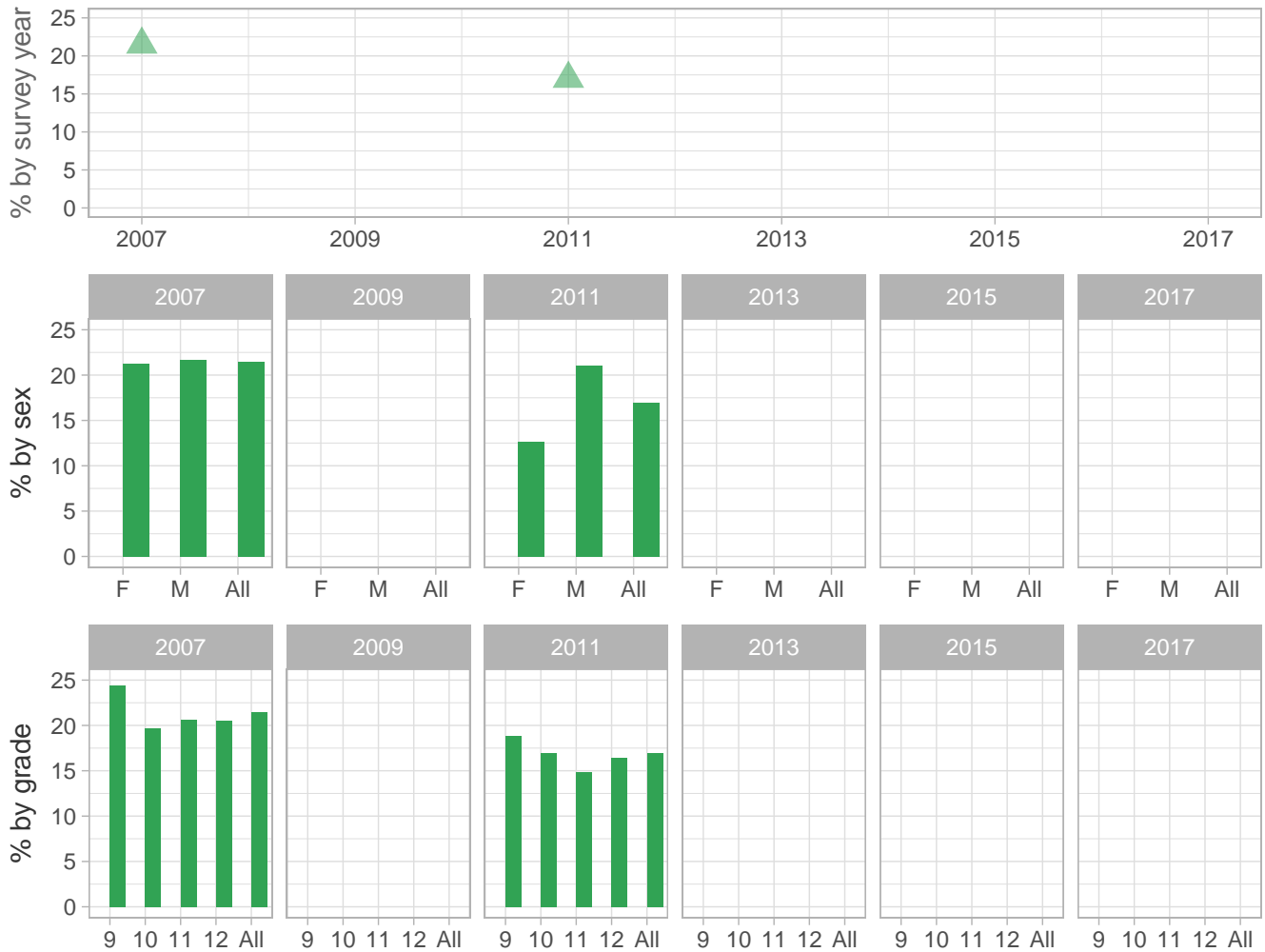
Number (n): Estimated number of students projected based on school enrollment data.

-: Data not available; \*: Suppressed due to small cell sizes.



### Drug Use Perceptions and Understanding

Percent of students who perceive of no/slight risk from trying cocaine once or twice



School-level by Sex and Grade

		2009(pct)	2011(pct)	2013(pct)	2015(pct)	2017(pct)	2017(n)
<b>By sex</b>	F	-	*	-	-	-	-
	M	-	*	-	-	-	-
<b>By grade</b>	9th	-	*	-	-	-	-
	10th	-	*	-	-	-	-
	11th	-	-	-	-	-	-
	12th	-	-	-	-	-	-
<b>All</b>	All	-	*	-	-	-	-

How the question was actually asked: How much do you think people risk harming themselves (physically or in other ways), if they try cocaine in powder form once or twice?; a: No risk; b: Slight risk; c: Moderate risk; d: Great risk;

Percent (pct): numerator: ab; denominator: abcd; qid: 84; 2007q84; 2009q999; 2011q84; 2013q999; 2015q999; 2017q999;

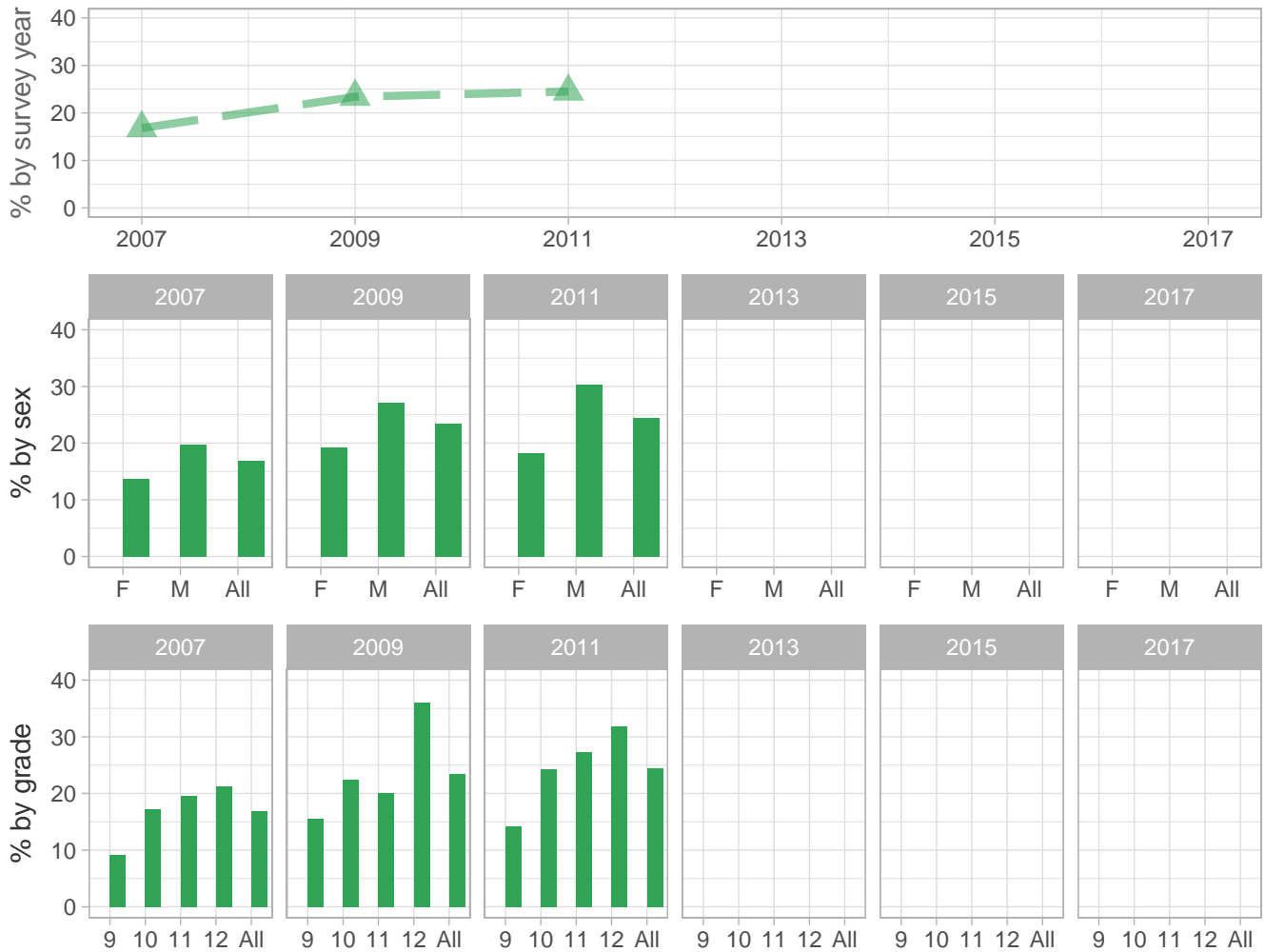
Number (n): Estimated number of students projected based on school enrollment data.

-: Data not available; \*: Suppressed due to small cell sizes.



### Drug Use Perceptions and Understanding

Percent of students who think it is not wrong at all for someone their age to smoke marijuana



School-level by Sex and Grade

		2009(pct)	2011(pct)	2013(pct)	2015(pct)	2017(pct)	2017(n)
<b>By sex</b>	F	-	*	-	-	-	-
	M	-	*	-	-	-	-
<b>By grade</b>	9th	-	*	-	-	-	-
	10th	-	*	-	-	-	-
	11th	-	-	-	-	-	-
	12th	-	-	-	-	-	-
<b>All</b>	All	-	*	-	-	-	-

How the question was actually asked: How wrong do you think it is for someone your age to smoke marijuana?; a: Very wrong; b: Wrong; c: A little bit wrong; d: Not at all wrong;

Percent (pct): numerator: d; denominator: abcd; qid: 91; 2007q91; 2009q90; 2011q90; 2013q999; 2015q999; 2017q999;

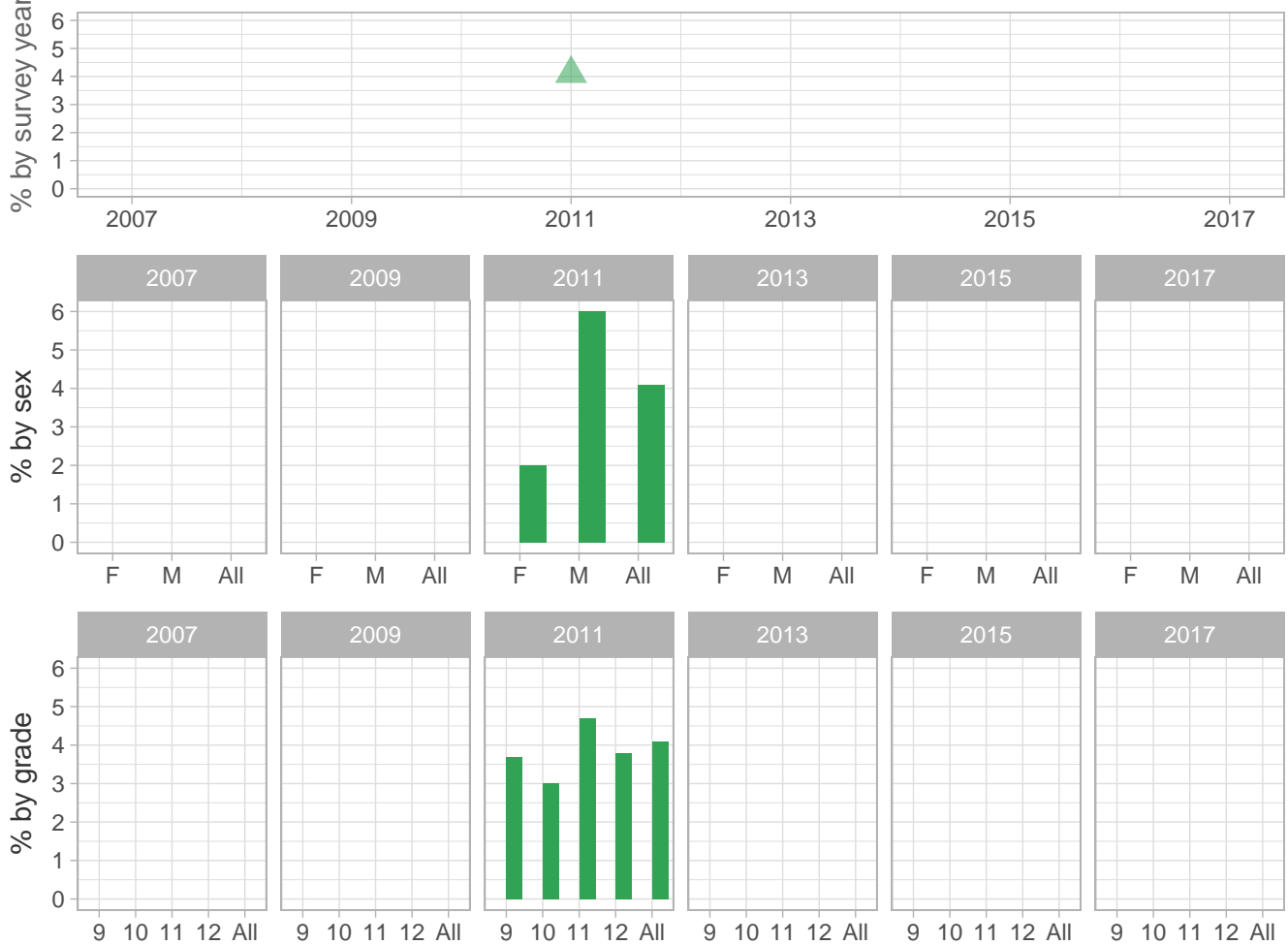
Number (n): Estimated number of students projected based on school enrollment data.

-: Data not available; \*: Suppressed due to small cell sizes.



### Drug Use Perceptions and Understanding

Percent of students who did not think it is wrong at all for someone their age to take prescription drugs without a prescription



School-level by Sex and Grade

		2009(pct)	2011(pct)	2013(pct)	2015(pct)	2017(pct)	2017(n)
<b>By sex</b>	F	-	*	-	-	-	-
	M	-	*	-	-	-	-
<b>By grade</b>	9th	-	*	-	-	-	-
	10th	-	*	-	-	-	-
	11th	-	-	-	-	-	-
	12th	-	-	-	-	-	-
<b>All</b>	All	-	*	-	-	-	-

How the question was actually asked: How wrong do you think it is for someone your age to take a prescription drug (such as OxyContin, Percocet, Vicodin, codeine, Adderall, Ritalin, or Xanax) without a doctor’s prescription?; a: Very wrong; b: Wrong; c: A little bit wrong; d: Not at all wrong;

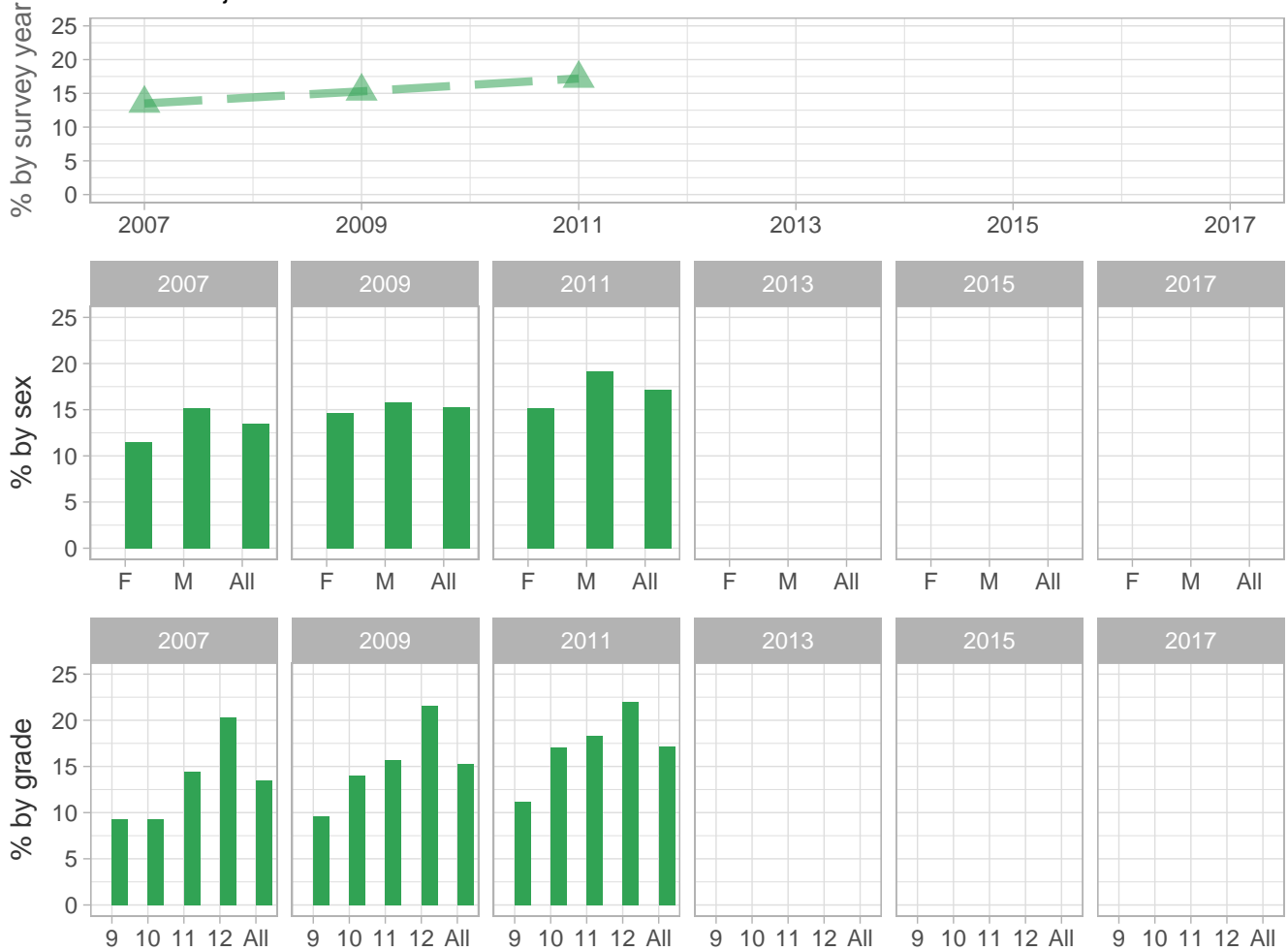
Percent (pct): numerator: d; denominator: abcd; qid: 137; 2007q999; 2009q999; 2011q91; 2013q999; 2015q999; 2017q999; Number (n): Estimated number of students projected based on school enrollment data.

-: Data not available; \*: Suppressed due to small cell sizes.



### Drug Use Perceptions and Understanding

Percent of students who perceive that parents do not think it is wrong for someone their age to smoke marijuana



School-level by Sex and Grade

		2009(pct)	2011(pct)	2013(pct)	2015(pct)	2017(pct)	2017(n)
<b>By sex</b>	F	-	*	-	-	-	-
	M	-	*	-	-	-	-
<b>By grade</b>	9th	-	*	-	-	-	-
	10th	-	*	-	-	-	-
	11th	-	-	-	-	-	-
	12th	-	-	-	-	-	-
<b>All</b>	All	-	*	-	-	-	-

How the question was actually asked: How wrong do your parents think it is for someone your age to smoke marijuana?; a: Very wrong; b: Wrong; c: A little bit wrong; d: Not at all wrong; e: Not sure;

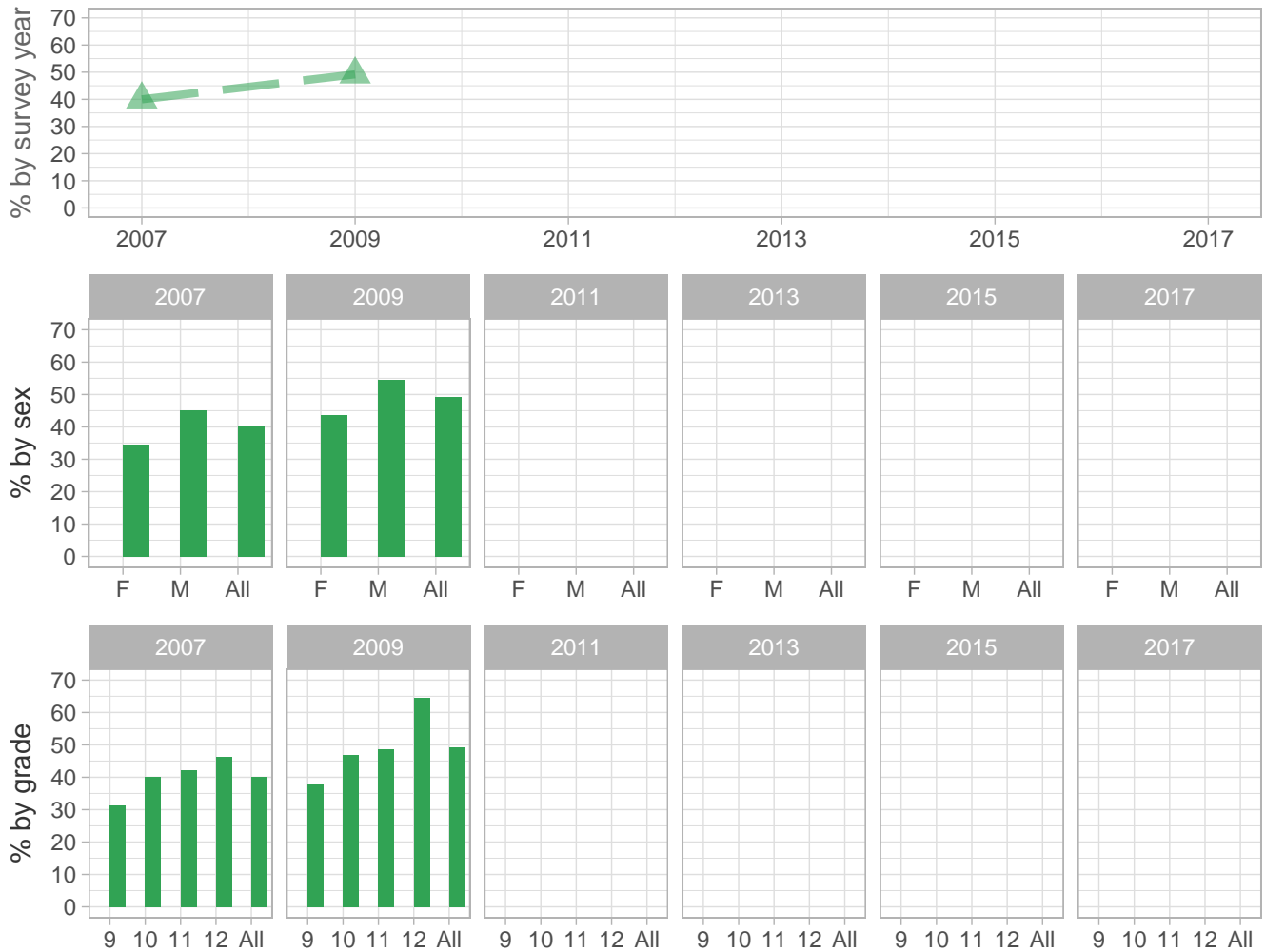
Percent (pct): numerator: cde; denominator: abcde; qid: 95; 2007q95; 2009q94; 2011q94; 2013q999; 2015q999; 2017q999; Number (n): Estimated number of students projected based on school enrollment data.

-: Data not available; \*: Suppressed due to small cell sizes.

 School  Region  NH

### Drug Use Perceptions and Understanding

Percent of students who perceive of no/slight risk from smoking marijuana occasionally



School-level by Sex and Grade

		2009(pct)	2011(pct)	2013(pct)	2015(pct)	2017(pct)	2017(n)
<b>By sex</b>	F	-	-	-	-	-	-
	M	-	-	-	-	-	-
<b>By grade</b>	9th	-	-	-	-	-	-
	10th	-	-	-	-	-	-
	11th	-	-	-	-	-	-
	12th	-	-	-	-	-	-
<b>All</b>	All	-	-	-	-	-	-

How the question was actually asked: How much do you think people risk harming themselves (physically or in other ways) if they smoke marijuana occasionally?; a: No risk; b: Slight risk; c: Moderate risk; d: Great risk;

Percent (pct): numerator: ab; denominator: abcd; qid: 82; 2007q82; 2009q82; 2011q999; 2013q999; 2015q999; 2017q999;

Number (n): Estimated number of students projected based on school enrollment data.

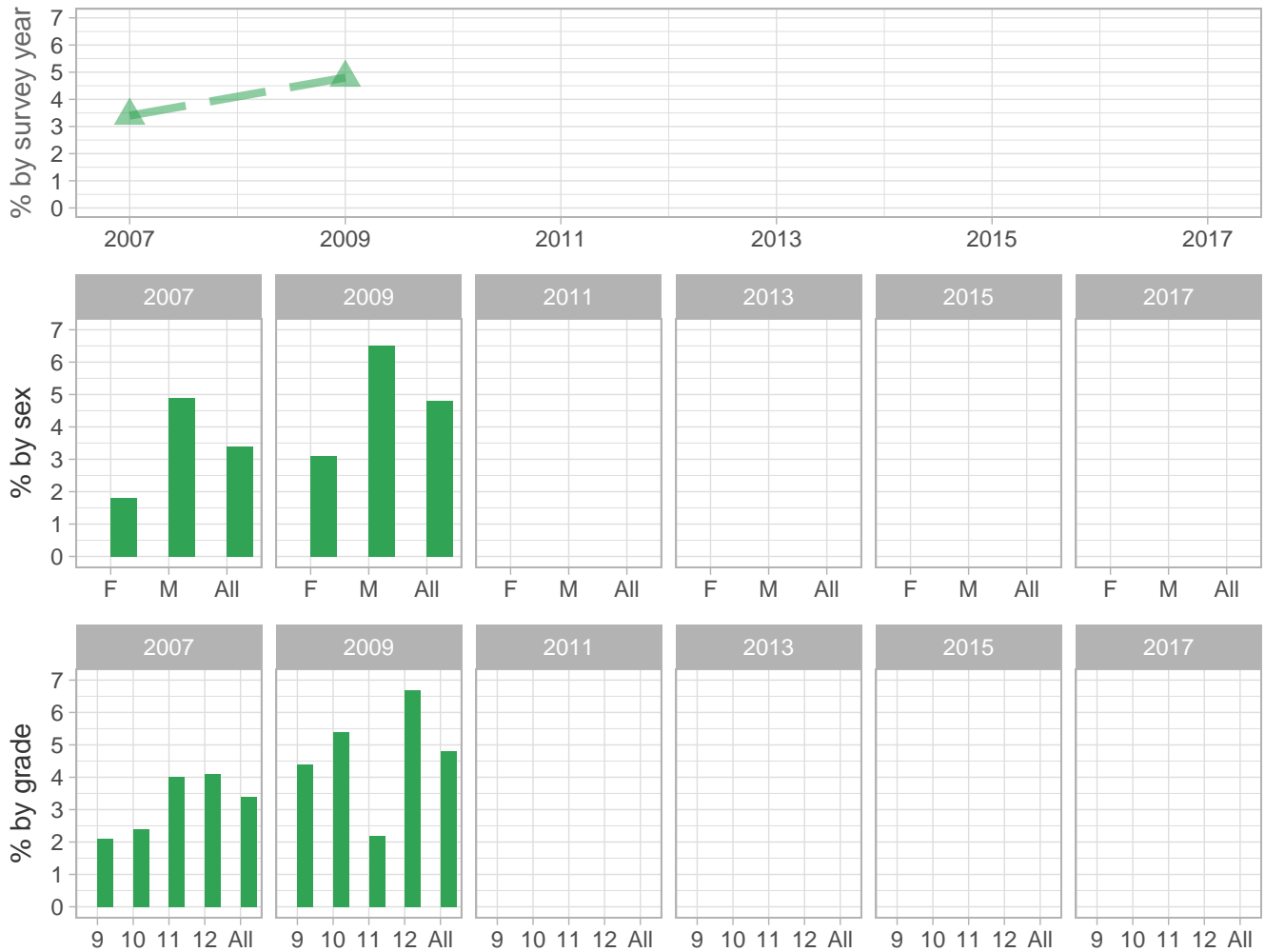
-: Data not available; \*: Suppressed due to small cell sizes.





### Drug Use Perceptions and Understanding

Percent of students who think it is not wrong at all for someone their age to use illegal drugs



School-level by Sex and Grade

		2009(pct)	2011(pct)	2013(pct)	2015(pct)	2017(pct)	2017(n)
<b>By sex</b>	F	-	-	-	-	-	-
	M	-	-	-	-	-	-
<b>By grade</b>	9th	-	-	-	-	-	-
	10th	-	-	-	-	-	-
	11th	-	-	-	-	-	-
	12th	-	-	-	-	-	-
<b>All</b>	All	-	-	-	-	-	-

How the question was actually asked: How wrong do you think it is for someone your age to use LSD, cocaine, amphetamines or another illegal drug?; a: Very wrong; b: Wrong; c: A little bit wrong; d: Not wrong at all;

Percent (pct): numerator: d; denominator: abcd; qid: 92; 2007q92; 2009q91; 2011q999; 2013q999; 2015q999; 2017q999;

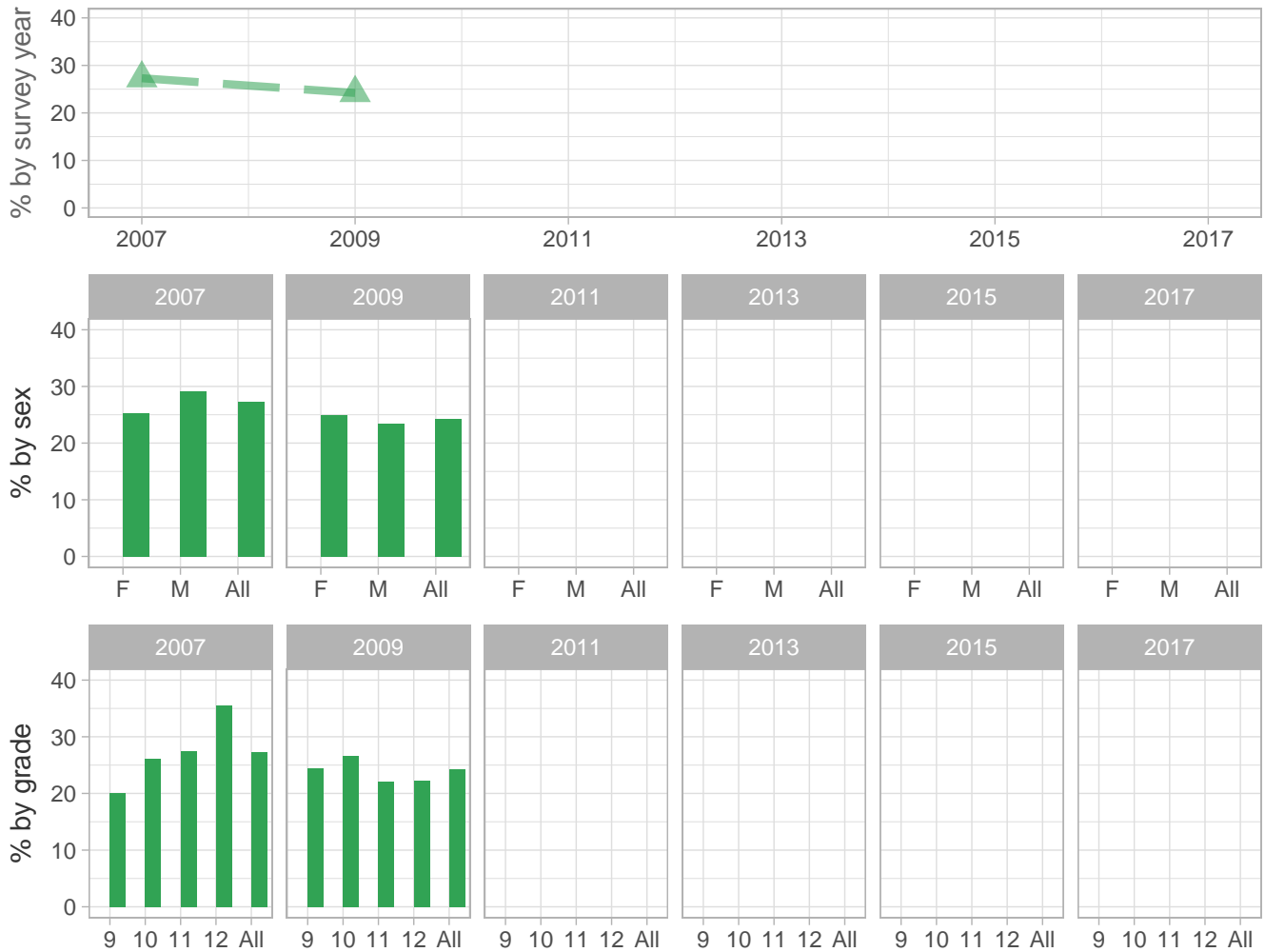
Number (n): Estimated number of students projected based on school enrollment data.

-: Data not available; \*: Suppressed due to small cell sizes.

 School  Region  NH

### Drug Use Perceptions and Understanding

Percent of students who perceived of easy or very easy access to illicit drugs



School-level by Sex and Grade

		2009(pct)	2011(pct)	2013(pct)	2015(pct)	2017(pct)	2017(n)
<b>By sex</b>	F	-	-	-	-	-	-
	M	-	-	-	-	-	-
<b>By grade</b>	9th	-	-	-	-	-	-
	10th	-	-	-	-	-	-
	11th	-	-	-	-	-	-
	12th	-	-	-	-	-	-
<b>All</b>	All	-	-	-	-	-	-

How the question was actually asked: If you wanted to get a drug like cocaine, LSD, or amphetamines, how hard or easy would it be for you to get some?; a: Very hard; b: Sort of hard; c: Sort of easy; d: Very easy;

Percent (pct): numerator: cd; denominator: abcd; qid: 99; 2007q99; 2009q98; 2011q999; 2013q999; 2015q999; 2017q999;

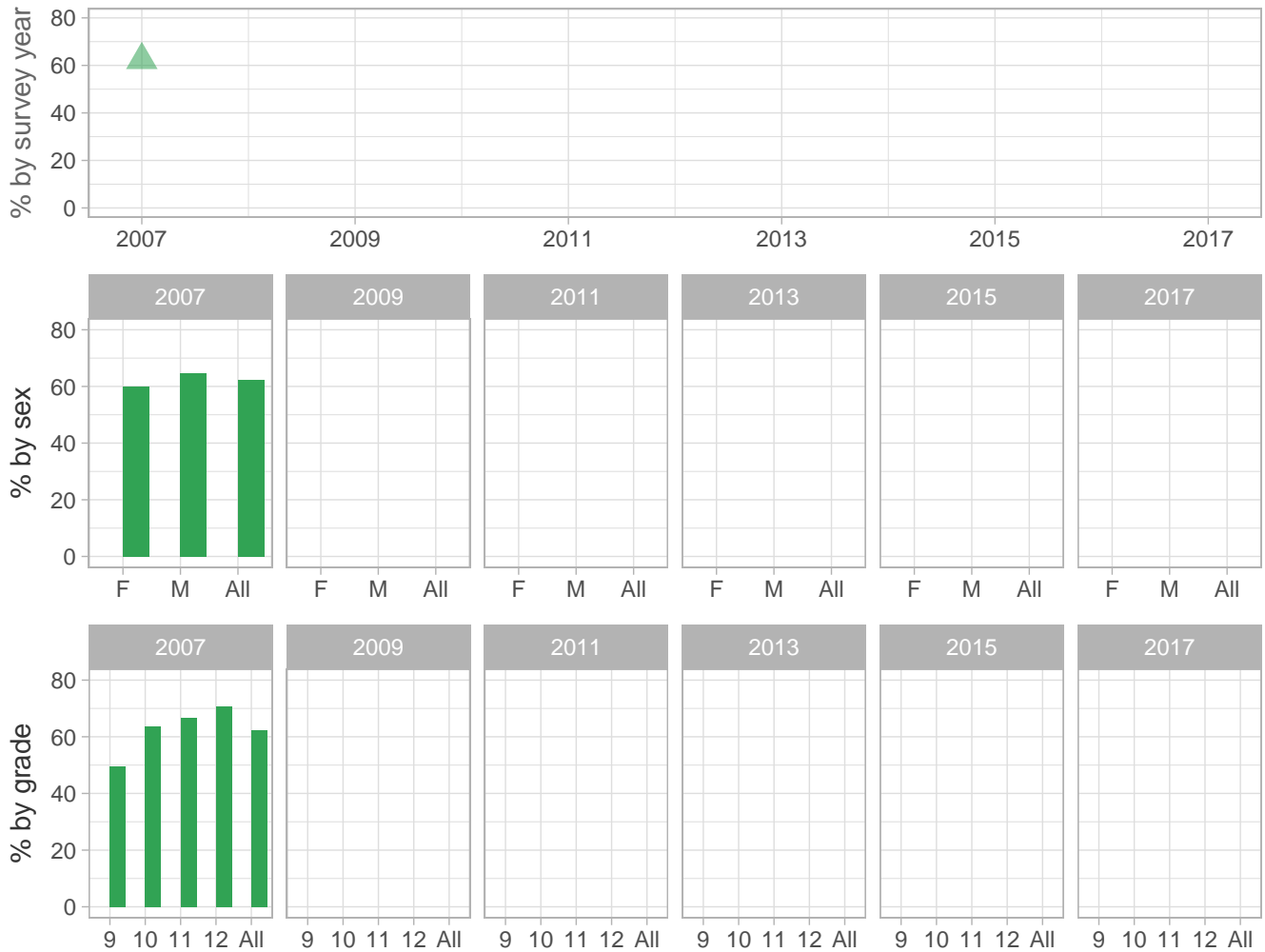
Number (n): Estimated number of students projected based on school enrollment data.

-: Data not available; \*: Suppressed due to small cell sizes.



### Drug Use Perceptions and Understanding

Percent of students who perceive of no/slight risk from trying marijuana once or twice



School-level by Sex and Grade

		2009(pct)	2011(pct)	2013(pct)	2015(pct)	2017(pct)	2017(n)
<b>By sex</b>	F	-	-	-	-	-	-
	M	-	-	-	-	-	-
<b>By grade</b>	9th	-	-	-	-	-	-
	10th	-	-	-	-	-	-
	11th	-	-	-	-	-	-
	12th	-	-	-	-	-	-
<b>All</b>	All	-	-	-	-	-	-

How the question was actually asked: How much do you think people risk harming themselves (physically or in other ways) if they try marijuana once or twice?; a: No risk; b: Slight risk; c: Moderate risk; d: Great risk;

Percent (pct): numerator: ab; denominator: abcd; qid: 81; 2007q81; 2009q999; 2011q999; 2013q999; 2015q999; 2017q999;

Number (n): Estimated number of students projected based on school enrollment data.

-: Data not available; \*: Suppressed due to small cell sizes.