

# Windham High School: 2017 NH YRBS Preliminary Report

---

## Alcohol Use - Perceptions: Time Trends, By Sex, and By Grade

Windham High School is in the Greater Derry Public Health Region and is served by the Bridges crisis center.

## PRELIMINARY RESULTS (v1.2)

This report contains preliminary results for 2017. All 2017 results are subject to change when the CDC returns the final dataset to the State, expected in early 2018. Please use caution when referring to and using these preliminary data until the final data set is received from the CDC. This report contains results for all questions asked on any YRBS survey since 2007. Note, access to regional level results were first made available in 2015 and are not available prior to that year.

## State and Regional Estimates

State and Regional estimates are calculated from a random sample developed using scientific survey methods. These methods ensure the respondents are representative of students in the region in the State. These estimates account for student, classroom, school, and regional factors. The random sample is not designed to provide school level estimates.

## School Level Estimates

The 2017 survey response rate at Windham High School was 87% where 786 of 901 students took the survey. **School level estimates are unweighted and based on a convenience sample of students in attendance, and not opting out of participation in the YRBS, on a given date and time during the school year.** However, because participation was relatively high the school estimates may still be representative of the entire school population. Results could be less representative if specific classrooms or classroom types were not included in the survey. We have attempted to estimate how many students in the school actually fall within each risk category. We did this by scaling up the students responding in the survey using school enrollment data.

Estimates number and percentage were suppressed (\*) if the underlying sample size was <60 respondents and/or cell sizes are between 1 and 5.

## Help and assistance

### Questions on this report (NH YRBS Community level preliminary report)

Health Statistics and Data Management  
Division of Public Health Services - State of NH  
NH.YouthRiskBehaviorSurvey@dhhs.nh.gov; (603) 271-4988;

### Additional technical assistance for YRBS related information

NH Center for Excellence  
nhcenterforexcellence@jsi.com; (603) 573-3300  
<http://nhcenterforexcellence.org/center-services/request-ta/>

## Change Log

**v1.2:** Indicators revised to display by CDC question direction as greater risk; and, revised methodology to more accurately display number of students projected based on school enrollment data.

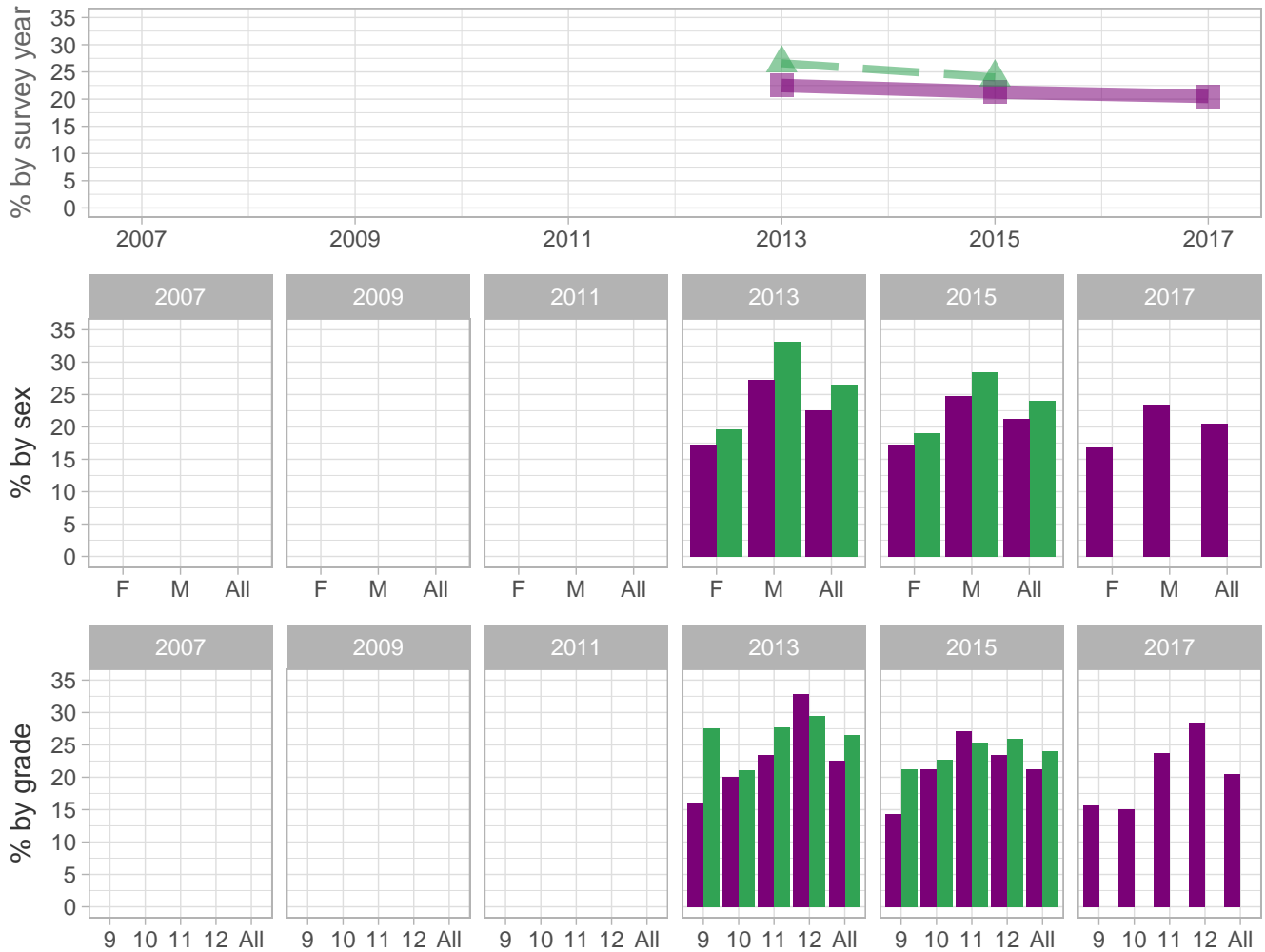
**v1.1:** School estimates corrected to include CDC sample - report sent 8/31-9/1

**v1.0:** Initial report sent 8/29



### Alcohol Use – Perceptions

Percent of students who perceive of no/slight risk from binge drinking once or twice a week



School-level by Sex and Grade

		2009(pct)	2011(pct)	2013(pct)	2015(pct)	2017(pct)	2017(n)
<b>By sex</b>	F	-	-	17.2	17.3	16.8	72
	M	-	-	27.2	24.7	23.4	108
<b>By grade</b>	9th	-	-	16.1	14.4	15.7	42
	10th	-	-	20.1	21.2	15.1	34
	11th	-	-	23.5	27.1	23.7	52
	12th	-	-	32.8	23.4	28.4	54
<b>All</b>	All	-	-	22.5	21.3	20.5	185

How the question was actually asked: How much do you think people risk harming themselves (physically or in other ways) if they have five or more drinks of alcohol (beer, wine, or liquor) once or twice a week?; a: No risk ; b: Slight risk ; c: Moderate risk ; d: Great risk;

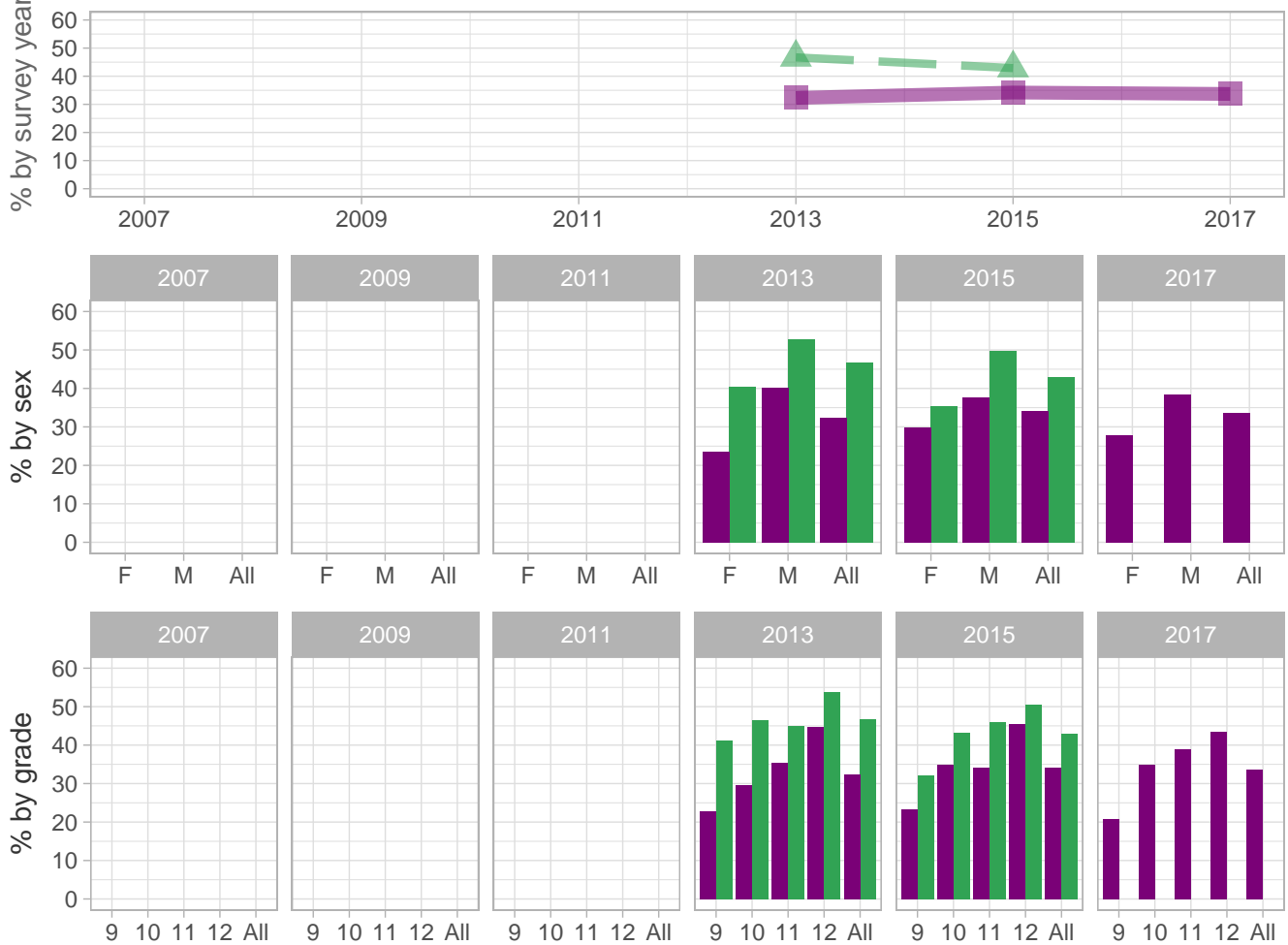
Percent (pct): numerator: ab; denominator: abcd; qid: 159; 2007q999; 2009q999; 2011q999; 2013q82; 2015q84; 2017q85; Number (n): Estimated number of students projected based on school enrollment data.

-: Data not available; \*: Suppressed due to small cell sizes.



### Alcohol Use – Perceptions

Percent of students who perceive that peers do not think it is wrong to for you to have one or two drinks of an alcoholic beverage nearly every day



School-level by Sex and Grade

		2009(pct)	2011(pct)	2013(pct)	2015(pct)	2017(pct)	2017(n)
<b>By sex</b>	F	-	-	23.5	29.9	27.9	121
	M	-	-	40.3	37.7	38.4	177
<b>By grade</b>	9th	-	-	22.9	23.3	20.7	55
	10th	-	-	29.6	35.0	34.9	79
	11th	-	-	35.3	34.1	38.9	85
	12th	-	-	44.8	45.6	43.5	82
<b>All</b>	All	-	-	32.3	34.2	33.7	304

How the question was actually asked: How wrong do your friends feel it would be for you to have one or two drinks of an alcoholic beverage (beer, wine, or liquor) nearly every day?; a: Very wrong ; b: Wrong ; c: A little bit wrong ; d: Not at all wrong ; e: Not sure;

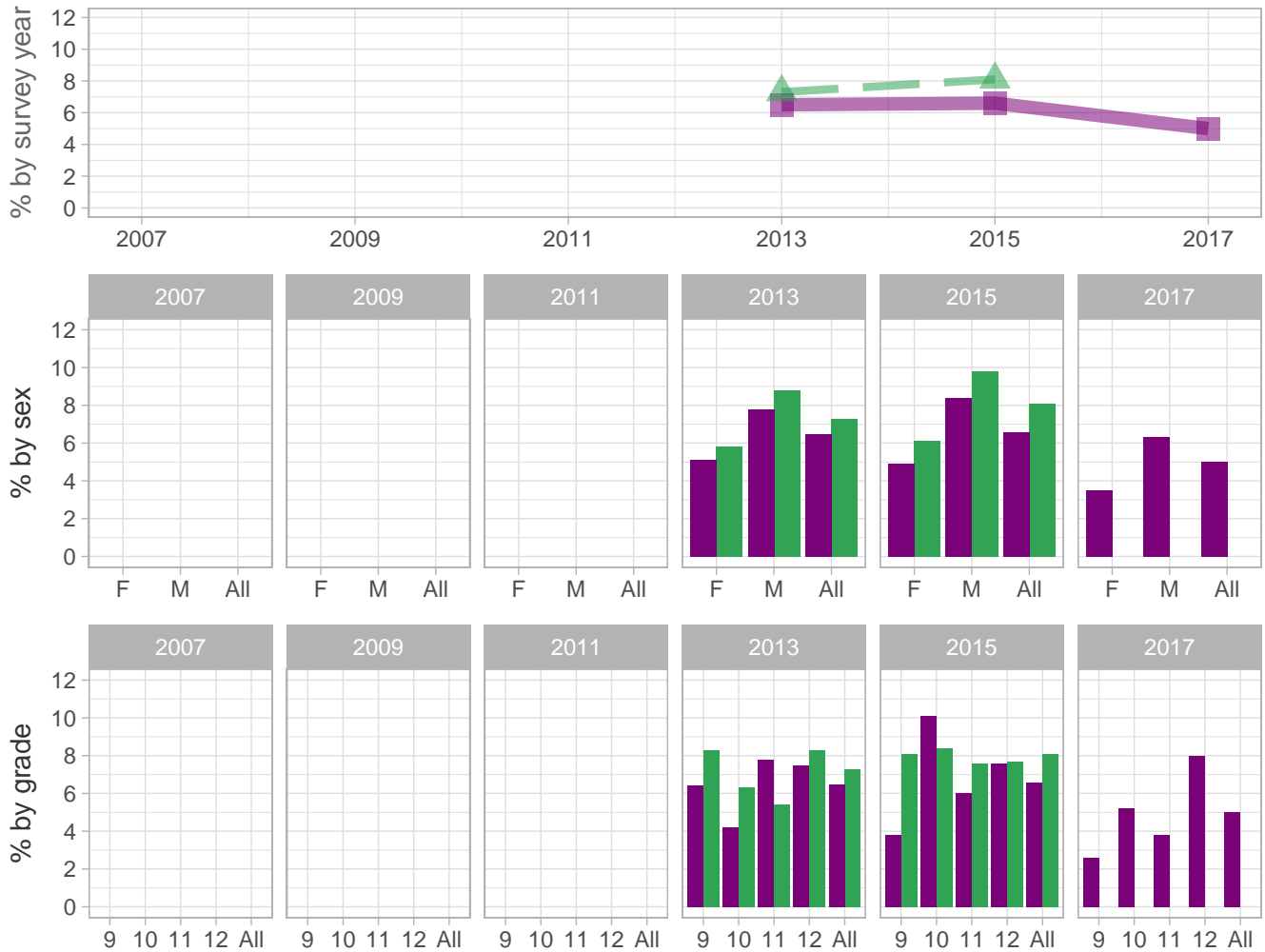
Percent (pct): numerator: cde; denominator: abcde; qid: 163; 2007q999; 2009q999; 2011q999; 2013q86; 2015q88; 2017q89; Number (n): Estimated number of students projected based on school enrollment data.

-: Data not available; \*: Suppressed due to small cell sizes.



### Alcohol Use – Perceptions

Percent of students who approved or strongly approved of frequent alcohol use



School-level by Sex and Grade

		2009(pct)	2011(pct)	2013(pct)	2015(pct)	2017(pct)	2017(n)
<b>By sex</b>	F	-	-	5.1	4.9	3.5	16
	M	-	-	7.8	8.4	6.3	30
<b>By grade</b>	9th	-	-	6.4	3.8	2.6	7
	10th	-	-	4.2	10.1	5.2	12
	11th	-	-	7.8	6.0	3.8	9
	12th	-	-	7.5	7.6	8.0	16
<b>All</b>	<b>All</b>	-	-	6.5	6.6	5.0	46

How the question was actually asked: How do you feel about someone your age having one or two drinks of alcohol (beer, wine, or liquor) nearly every day?; a: Strongly approve ; b: Approve ; c: Neither approve nor disapprove ; d: Disapprove ; e: Strongly disapprove;

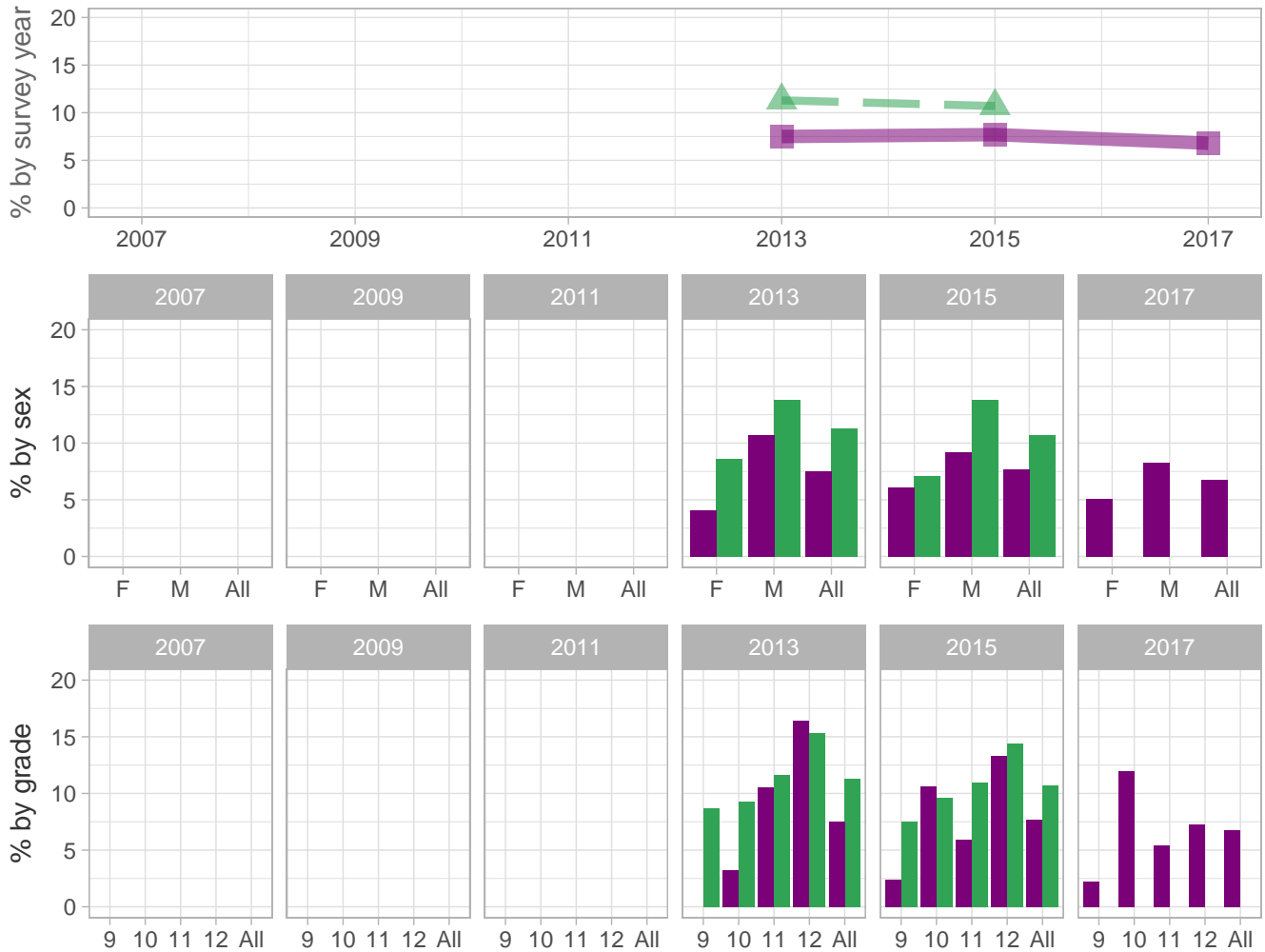
Percent (pct): numerator: ab; denominator: abcde; qid: 169; 2007q999; 2009q999; 2011q999; 2013q93; 2015q95; 2017q92; Number (n): Estimated number of students projected based on school enrollment data.

-: Data not available; \*: Suppressed due to small cell sizes.



### Alcohol Use – Perceptions

Percent of students who perceive that parents do not think it is wrong for youth to use alcohol



School-level by Sex and Grade

		2009(pct)	2011(pct)	2013(pct)	2015(pct)	2017(pct)	2017(n)
<b>By sex</b>	F	-	-	4.1	6.1	5.1	23
	M	-	-	10.7	9.2	8.3	39
<b>By grade</b>	9th	-	-	*	2.4	2.2	6
	10th	-	-	3.2	10.6	12.0	27
	11th	-	-	10.5	5.9	5.4	12
	12th	-	-	16.4	13.3	7.3	14
<b>All</b>	All	-	-	7.5	7.7	6.8	62

How the question was actually asked: How wrong do your parents feel it would be for you to have one or two drinks of an alcoholic beverage (beer, wine, or liquor) nearly every day?; a: Very wrong ; b: Wrong ; c: A little bit wrong ; d: Not at all wrong ; e: Not sure;

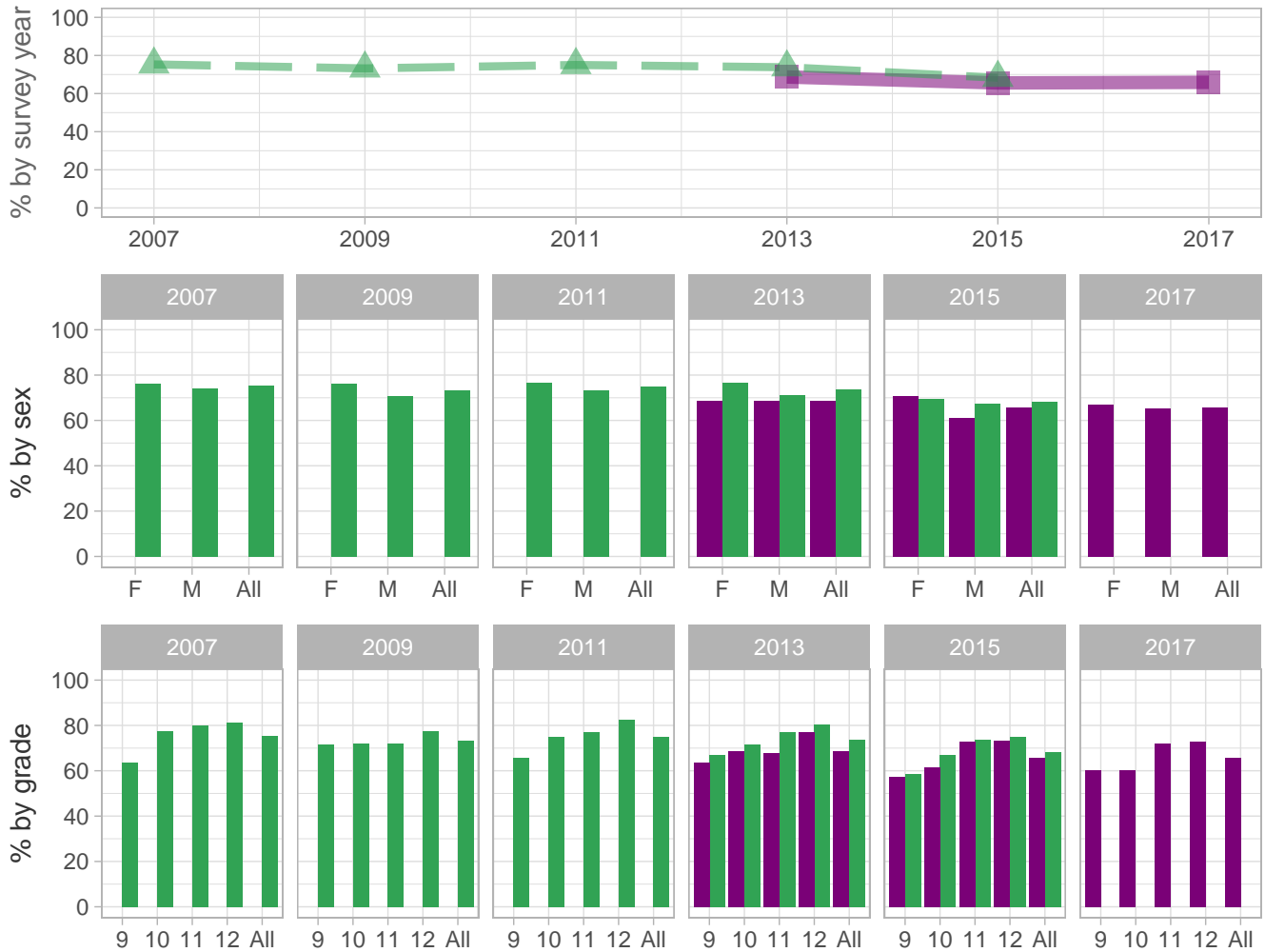
Percent (pct): numerator: cde; denominator: abcde; qid: 167; 2007q999; 2009q999; 2011q999; 2013q90; 2015q92; 2017q93; Number (n): Estimated number of students projected based on school enrollment data.

-: Data not available; \*: Suppressed due to small cell sizes.

**School** **Region** **NH**

### Alcohol Use – Perceptions

Percent of students who perceived of easy or very easy access to alcohol



School-level by Sex and Grade

		2009(pct)	2011(pct)	2013(pct)	2015(pct)	2017(pct)	2017(n)
<b>By sex</b>	F	-	*	68.6	70.8	67.0	286
	M	-	*	68.8	60.9	65.1	302
<b>By grade</b>	9th	-	*	63.7	57.3	60.4	159
	10th	-	*	68.6	61.7	60.2	134
	11th	-	-	68.0	72.8	72.0	156
	12th	-	-	76.9	73.4	72.7	140
<b>All</b>	All	-	*	68.7	65.6	65.9	595

How the question was actually asked: If you wanted to get some alcohol (beer, wine, or liquor) how hard or easy would it be for you to get some?; a: Very hard ; b: Sort of hard ; c: Sort of easy ; d: Very easy;

Percent (pct): numerator: cd; denominator: abcd; qid: 96; 2007q96; 2009q95; 2011q97; 2013q95; 2015q97; 2017q97;

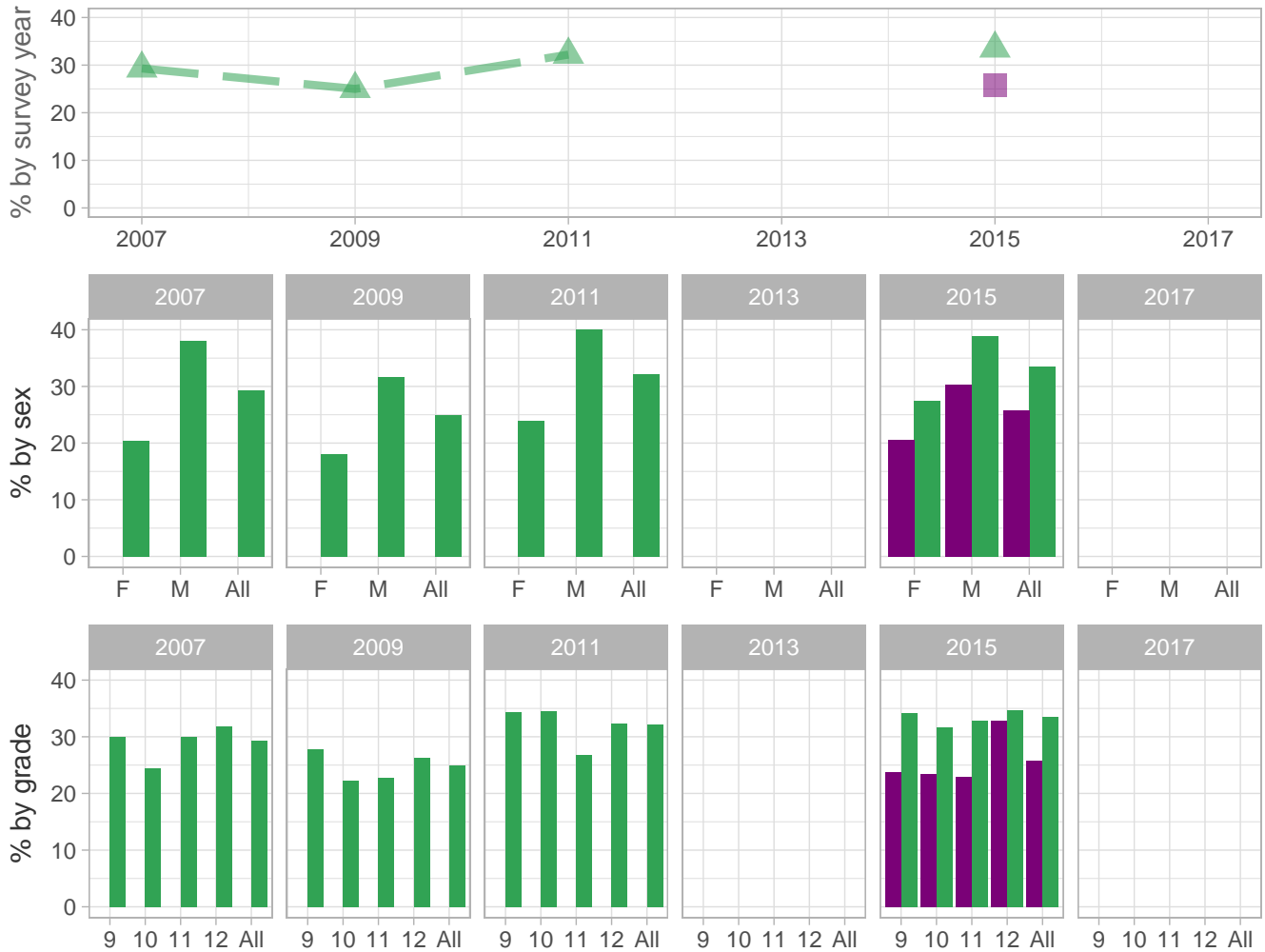
Number (n): Estimated number of students projected based on school enrollment data.

-: Data not available; \*: Suppressed due to small cell sizes.

 School  Region  NH

### Alcohol Use – Perceptions

Percent of students who perceive of no/slight risk from having one or two drinks every day



School-level by Sex and Grade

		2009(pct)	2011(pct)	2013(pct)	2015(pct)	2017(pct)	2017(n)
<b>By sex</b>	F	-	*	-	20.5	-	-
	M	-	*	-	30.3	-	-
<b>By grade</b>	9th	-	*	-	23.8	-	-
	10th	-	*	-	23.5	-	-
	11th	-	-	-	22.9	-	-
	12th	-	-	-	32.9	-	-
<b>All</b>	All	-	*	-	25.8	-	-

How the question was actually asked: How much do you think people risk harming themselves (physically or in other ways) if they have one or two drinks of an alcoholic beverage nearly every day?; a: No risk; b: Slight risk; c: Moderate risk; d: Great risk;

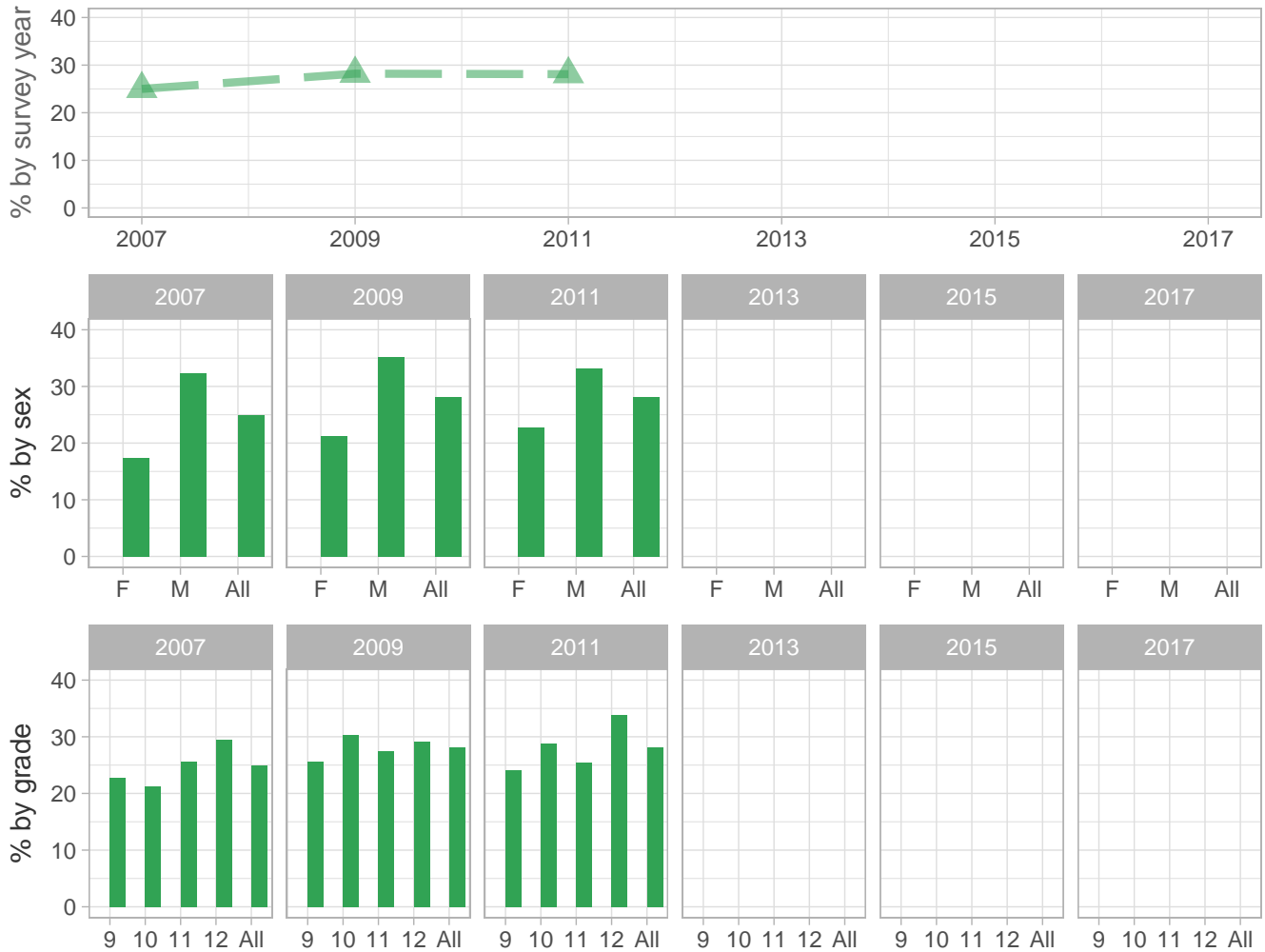
Percent (pct): numerator: ab; denominator: abcd; qid: 86; 2007q86; 2009q85; 2011q86; 2013q999; 2015q83; 2017q999; Number (n): Estimated number of students projected based on school enrollment data.

-: Data not available; \*: Suppressed due to small cell sizes.



### Alcohol Use – Perceptions

Percent of students who perceive of no/slight risk from binge drinking once or twice on the weekend



School-level by Sex and Grade

		2009(pct)	2011(pct)	2013(pct)	2015(pct)	2017(pct)	2017(n)
<b>By sex</b>	F	-	*	-	-	-	-
	M	-	*	-	-	-	-
<b>By grade</b>	9th	-	*	-	-	-	-
	10th	-	*	-	-	-	-
	11th	-	-	-	-	-	-
	12th	-	-	-	-	-	-
<b>All</b>	All	-	*	-	-	-	-

How the question was actually asked: How much do you think people risk harming themselves (physically or in other ways) if they have five or more drinks of an alcoholic beverage (beer, wine, liquor) once or twice each weekend?; a: No risk; b: Slight risk; c: Moderate risk; d: Great risk;

Percent (pct): numerator: ab; denominator: abcd; qid: 88; 2007q88; 2009q86; 2011q87; 2013q999; 2015q999; 2017q999; Number (n): Estimated number of students projected based on school enrollment data.

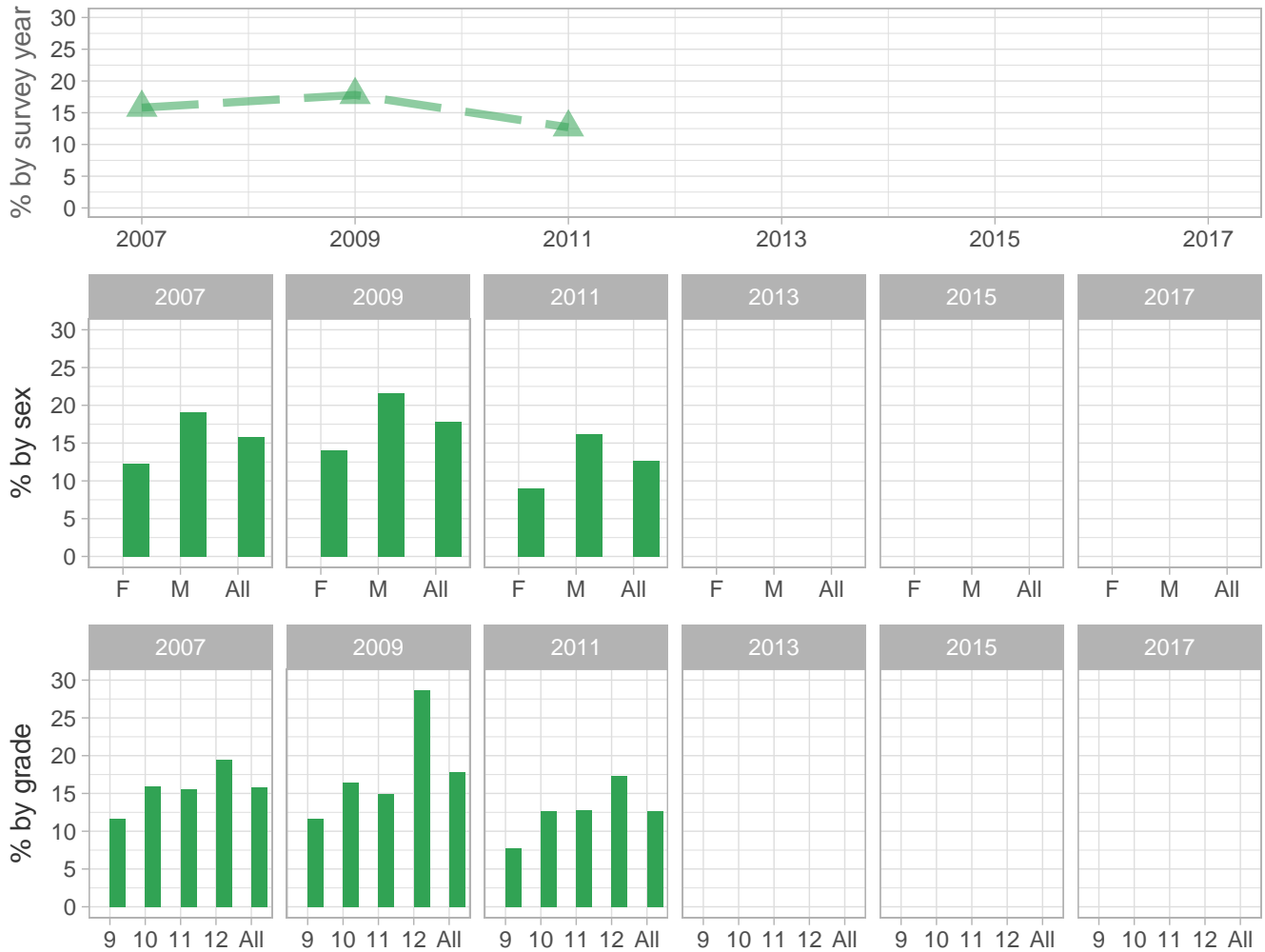
-: Data not available; \*: Suppressed due to small cell sizes.





### Alcohol Use – Perceptions

Percent of students who think it is not wrong at all for someone their age to drink regularly



School-level by Sex and Grade

		2009(pct)	2011(pct)	2013(pct)	2015(pct)	2017(pct)	2017(n)
<b>By sex</b>	F	-	*	-	-	-	-
	M	-	*	-	-	-	-
<b>By grade</b>	9th	-	*	-	-	-	-
	10th	-	*	-	-	-	-
	11th	-	-	-	-	-	-
	12th	-	-	-	-	-	-
<b>All</b>	All	-	*	-	-	-	-

How the question was actually asked: How wrong do you think it is for someone your age to drink beer, wine, or hard liquor (for example, vodka, whiskey, or gin) regularly?; a: Very wrong; b: Wrong; c: A little bit wrong; d: Not wrong at all;

Percent (pct): numerator: d; denominator: abcd; qid: 89; 2007q89; 2009q88; 2011q89; 2013q999; 2015q999; 2017q999;

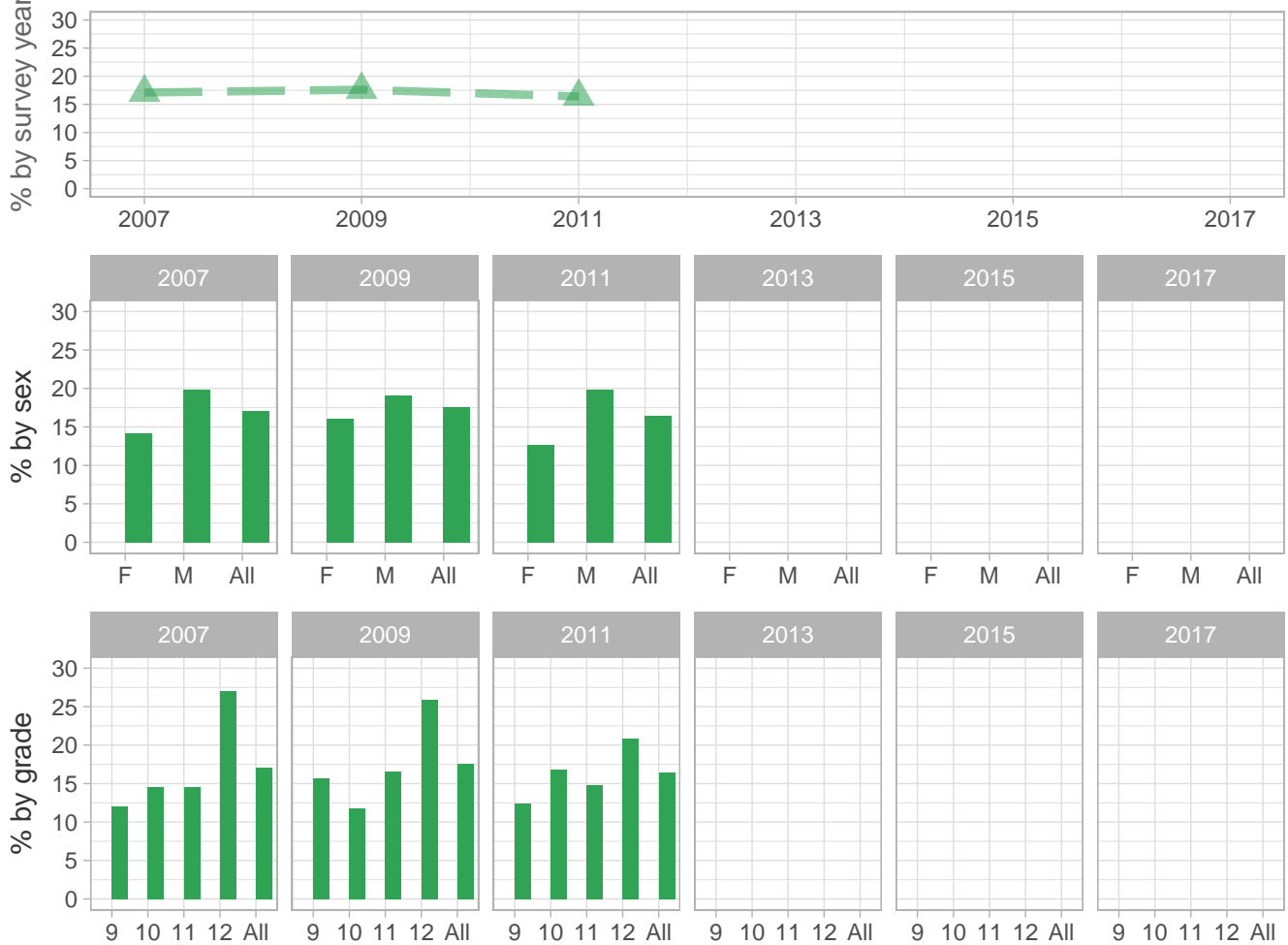
Number (n): Estimated number of students projected based on school enrollment data.

-: Data not available; \*: Suppressed due to small cell sizes.



### Alcohol Use – Perceptions

Percent of students who perceive that parents do not think it is wrong for youth to have one or two drinks of an alcoholic beverage nearly every day



School-level by Sex and Grade

		2009(pct)	2011(pct)	2013(pct)	2015(pct)	2017(pct)	2017(n)
<b>By sex</b>	F	-	*	-	-	-	-
	M	-	*	-	-	-	-
<b>By grade</b>	9th	-	*	-	-	-	-
	10th	-	*	-	-	-	-
	11th	-	-	-	-	-	-
	12th	-	-	-	-	-	-
<b>All</b>	All	-	*	-	-	-	-

How the question was actually asked: How wrong do your parents think it is for someone your age to drink beer, wine, or hard liquor (for example, vodka, whiskey, or gin) regularly?; a: Very wrong; b: Wrong; c: A little bit wrong; d: Not wrong at all; e: Not sure;

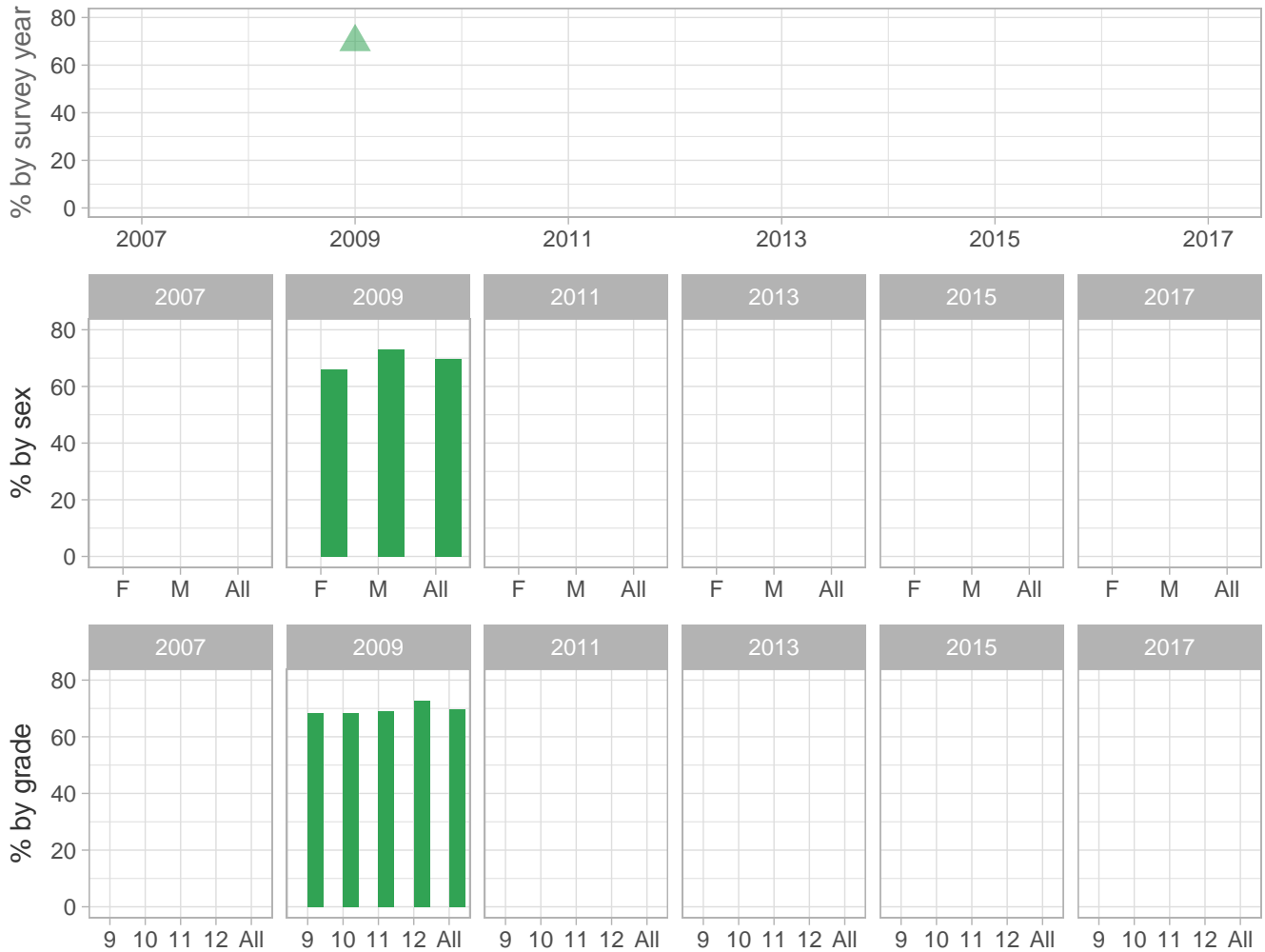
Percent (pct): numerator: cde; denominator: abcde; qid: 93; 2007q93; 2009q92; 2011q93; 2013q999; 2015q999; 2017q999; Number (n): Estimated number of students projected based on school enrollment data.

-: Data not available; \*: Suppressed due to small cell sizes.



### Alcohol Use – Perceptions

Percent of students who perceive of no/slight risk from having one or two drinks on the weekend



School-level by Sex and Grade

		2009(pct)	2011(pct)	2013(pct)	2015(pct)	2017(pct)	2017(n)
<b>By sex</b>	F	-	-	-	-	-	-
	M	-	-	-	-	-	-
<b>By grade</b>	9th	-	-	-	-	-	-
	10th	-	-	-	-	-	-
	11th	-	-	-	-	-	-
	12th	-	-	-	-	-	-
<b>All</b>	All	-	-	-	-	-	-

How the question was actually asked: How much do you think people risk harming themselves (physically or in other ways), if they have one or two drinks of an alcoholic beverage (beer, wine, or liquor) each weekend?; a: No risk; b: Slight risk; c: Moderate risk; d: Great risk;

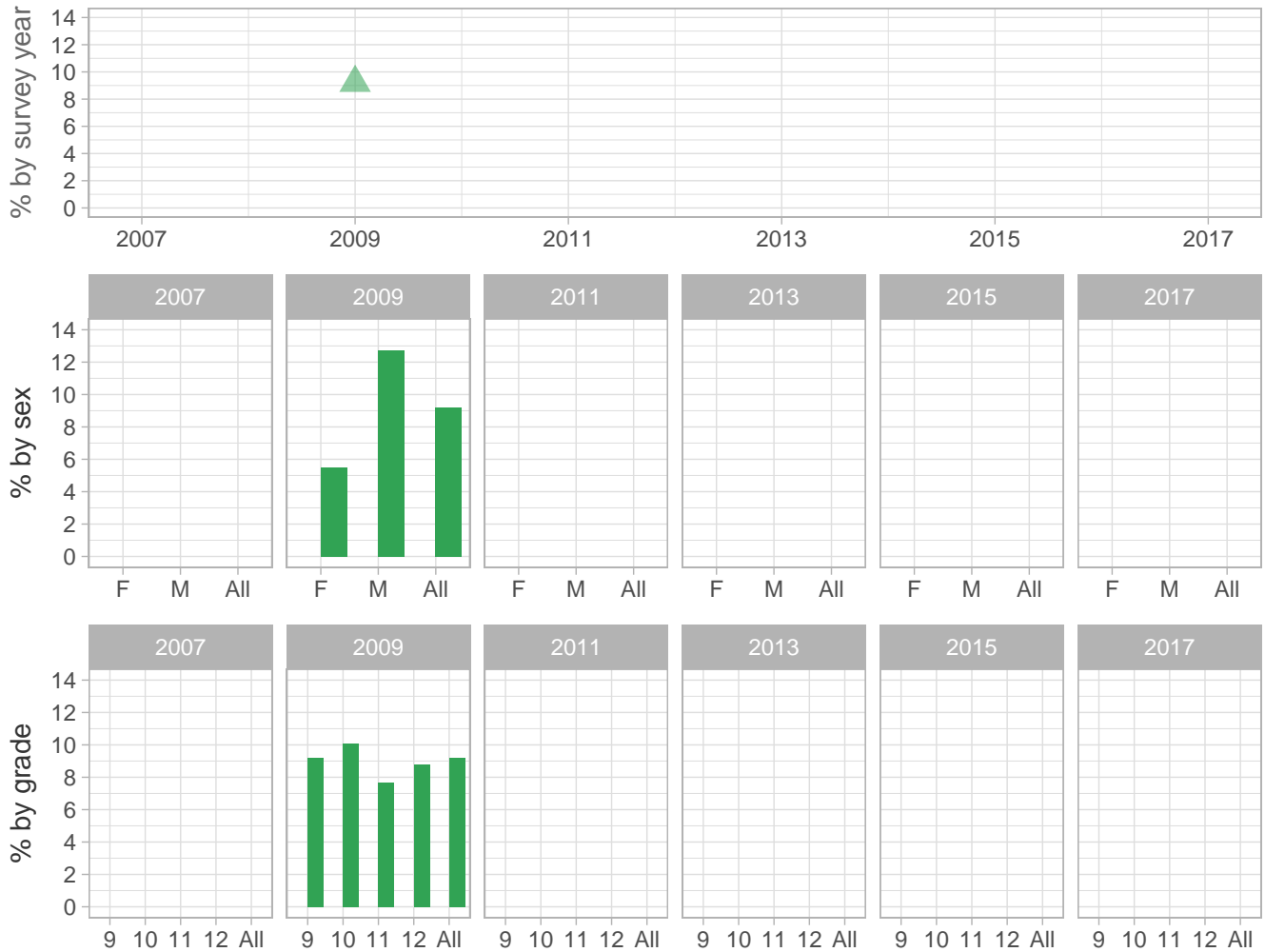
Percent (pct): numerator: ab; denominator: abcd; qid: 119; 2007q999; 2009q84; 2011q999; 2013q999; 2015q999; 2017q999;  
 Number (n): Estimated number of students projected based on school enrollment data.

-: Data not available; \*: Suppressed due to small cell sizes.



### Alcohol Use – Perceptions

Percent of students who perceive of no/slight risk from binge drinking nearly every day



School-level by Sex and Grade

		2009(pct)	2011(pct)	2013(pct)	2015(pct)	2017(pct)	2017(n)
<b>By sex</b>	F	-	-	-	-	-	-
	M	-	-	-	-	-	-
<b>By grade</b>	9th	-	-	-	-	-	-
	10th	-	-	-	-	-	-
	11th	-	-	-	-	-	-
	12th	-	-	-	-	-	-
<b>All</b>	All	-	-	-	-	-	-

How the question was actually asked: How much do you think people risk harming themselves (physically or in other ways), if they have five or more drinks of an alcoholic beverage (beer, wine, or liquor) nearly every day?; a: No risk; b: Slight risk; c: Moderate risk; d: Great risk;

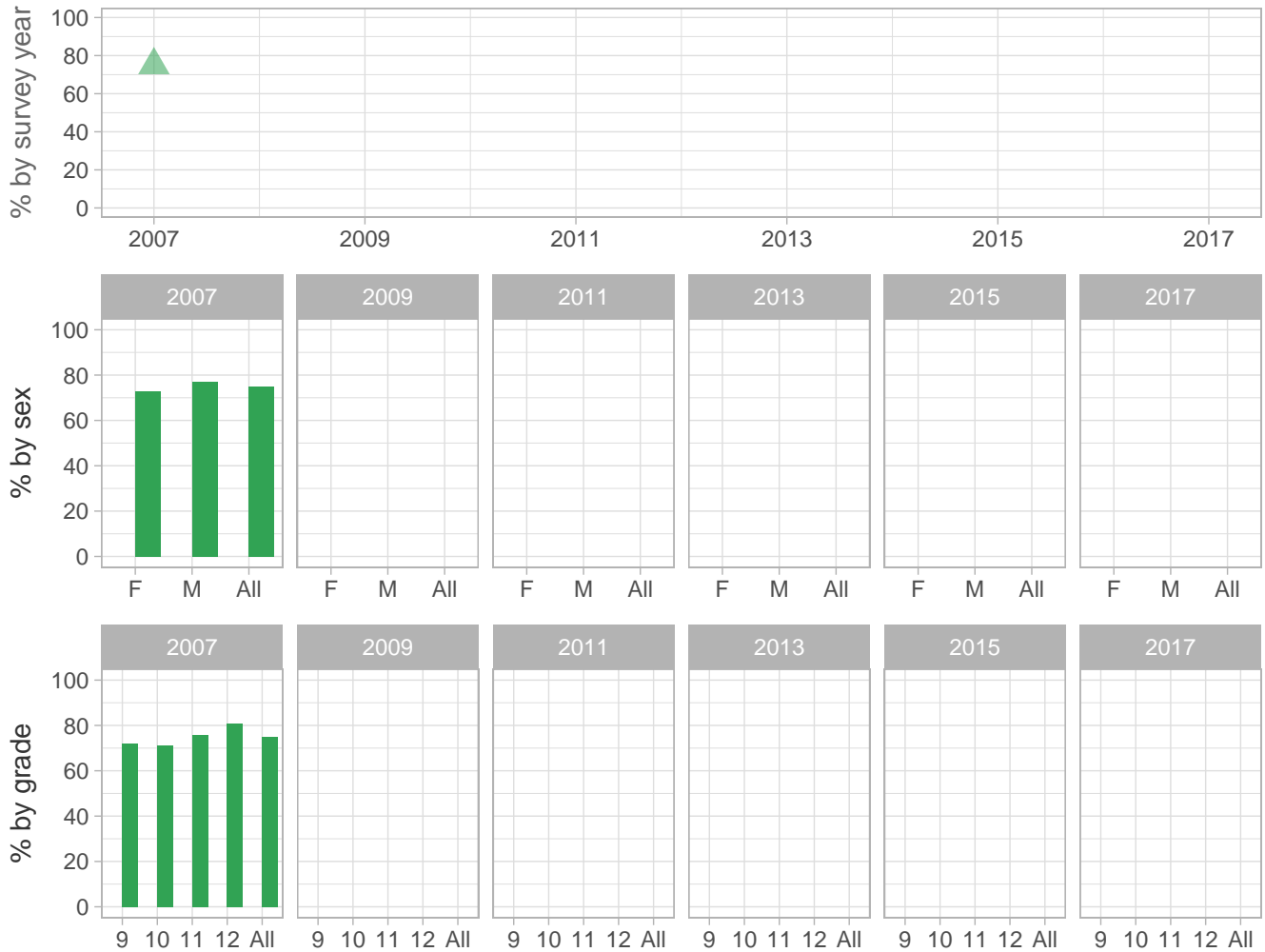
Percent (pct): numerator: ab; denominator: abcd; qid: 121; 2007q999; 2009q87; 2011q999; 2013q999; 2015q999; 2017q999;  
 Number (n): Estimated number of students projected based on school enrollment data.

-: Data not available; \*: Suppressed due to small cell sizes.



### Alcohol Use – Perceptions

Percent of students who perceive of no/slight risk from trying one or two drinks of alcohol



School-level by Sex and Grade

		2009(pct)	2011(pct)	2013(pct)	2015(pct)	2017(pct)	2017(n)
<b>By sex</b>	F	-	-	-	-	-	-
	M	-	-	-	-	-	-
<b>By grade</b>	9th	-	-	-	-	-	-
	10th	-	-	-	-	-	-
	11th	-	-	-	-	-	-
	12th	-	-	-	-	-	-
<b>All</b>	All	-	-	-	-	-	-

How the question was actually asked: How much do you think people risk harming themselves (physically or in other ways) if they try one or two drinks of an alcoholic beverage (beer, wine, liquor)?; a: No risk; b: Slight risk; c: Moderate risk; d: Great risk;

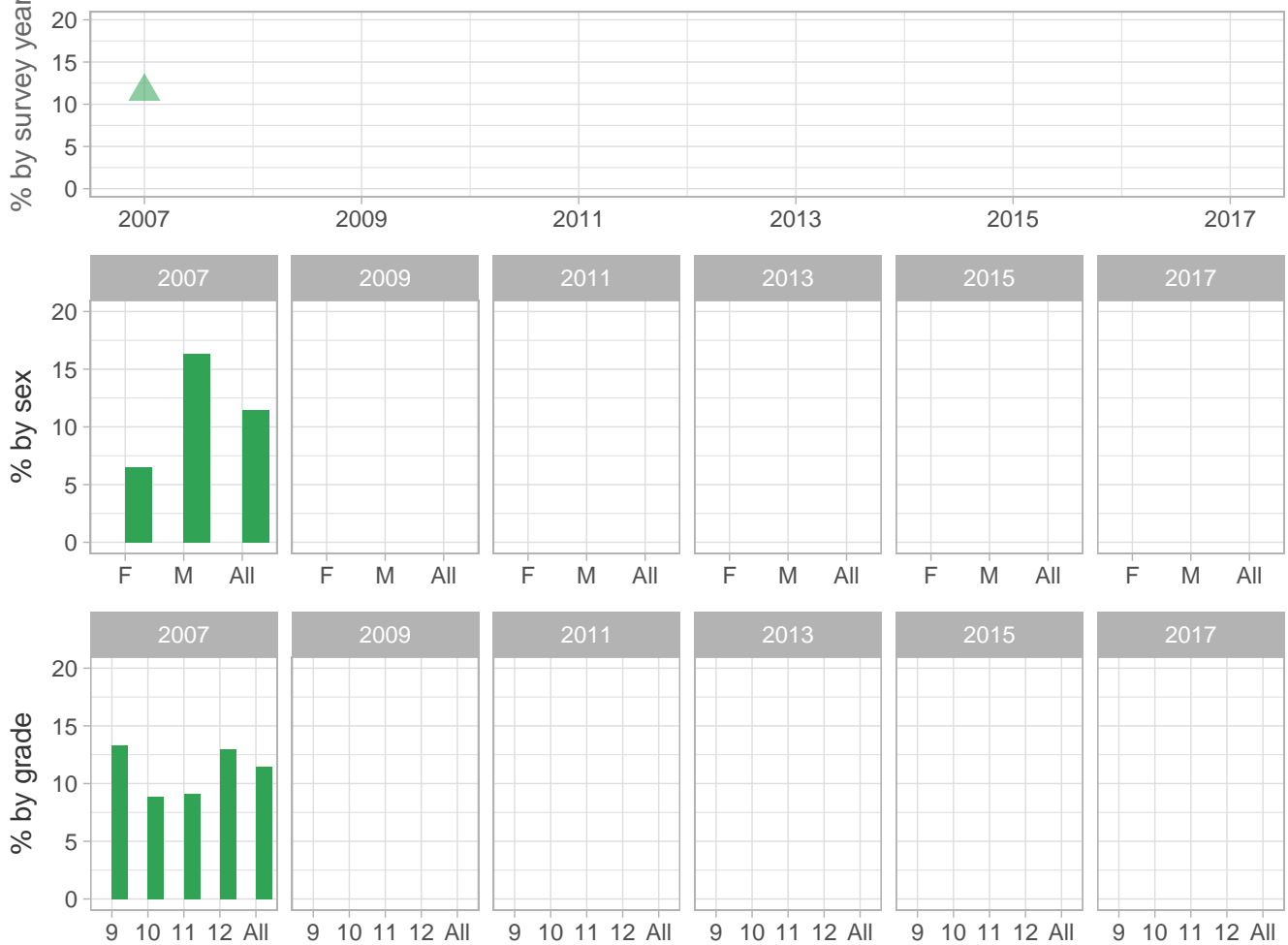
Percent (pct): numerator: ab; denominator: abcd; qid: 85; 2007q85; 2009q999; 2011q999; 2013q999; 2015q999; 2017q999; Number (n): Estimated number of students projected based on school enrollment data.

-: Data not available; \*: Suppressed due to small cell sizes.



### Alcohol Use – Perceptions

Percent of students who perceive of no/slight risk from drinking 4 or 5 alcoholic drinks nearly every day



School-level by Sex and Grade

		2009(pct)	2011(pct)	2013(pct)	2015(pct)	2017(pct)	2017(n)
<b>By sex</b>	F	-	-	-	-	-	-
	M	-	-	-	-	-	-
<b>By grade</b>	9th	-	-	-	-	-	-
	10th	-	-	-	-	-	-
	11th	-	-	-	-	-	-
	12th	-	-	-	-	-	-
<b>All</b>	All	-	-	-	-	-	-

How the question was actually asked: How much do you think people risk harming themselves (physically or in other ways) if they take four or five drinks of an alcoholic beverage (beer, wine, liquor) nearly every day?; a: No risk; b: Slight risk; c: Moderate risk; d: Great risk;

Percent (pct): numerator: ab; denominator: abcd; qid: 87; 2007q87; 2009q999; 2011q999; 2013q999; 2015q999; 2017q999; Number (n): Estimated number of students projected based on school enrollment data.

-: Data not available; \*: Suppressed due to small cell sizes.